

The MALIBU Club in Canada

For a couple of years now I have wanted to share information with you concerning the Malibu Club of Canada. Pieces of Medalta bearing the naming of this business are not too difficult to come by, although it is rare to see more than ten different pieces in any one collection. Hopefully collectors that have Malibu articles will enjoy the history behind their pieces, and perhaps the collectors that do not yet have Malibu pieces will find this article useful in their search for named pieces.

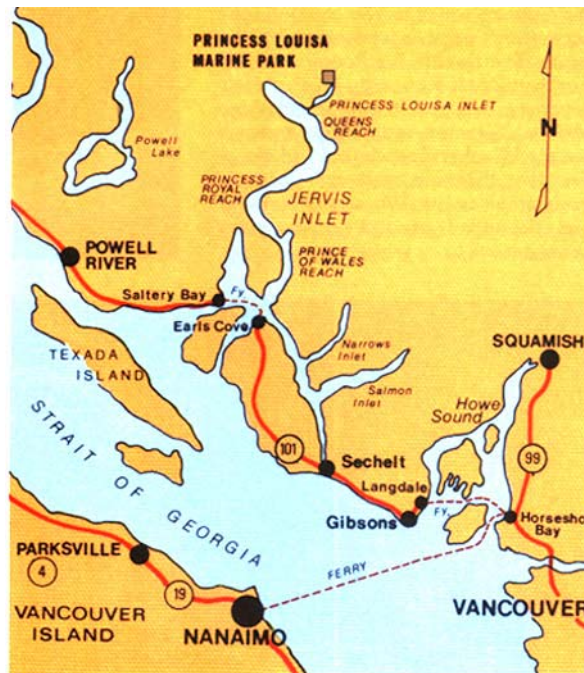
The accompanying maps show the location of the Malibu Club at the entrance to Princess

Louisa Inlet at the upper end of Jervis Inlet. The site itself cannot be reached by road, but you can get to the entrance of Jervis Inlet by taking highways 99 and then 101 from Vancouver up the coast to Earls Cove. From there you would have to go the rest of the way by boat.

More commonly, you would get to Princess Louisa Inlet by taking a boat up Georgia Straits to the islands of Texada, in the straits, and Nelson at

the entrance of the Jervis Inlet. After a long sail up the Jervis Inlet you will come to the entrance to the Princess Louisa Inlet just before you reach the upper limits of Jervis Inlet.

Captain George Richards of the Royal Navy charted Princess Louisa Inlet and he was likely the first white person to see it. Just a few years before in 1792 Captain George Vancouver was in Jervis Inlet and passed by the entrance to the



Cont'd on page 2

Rarely Seen C.P.R. Items

Ebay continues to produce some rare pieces. In recent months the two items shown here sold on ebay and much to my surprise the cup saucer went higher than the cereal.

Admittedly, I have only recorded three other saucers and a couple of cups decorated in this banded pattern, but who would have thought that the saucer alone would sell for \$115.00 Canadian. The cup which I have shown here is not a Medalta one and is only included here in order to show the banded pattern more clearly.

For the record, the saucer measured about 6 inches in diameter and was marked with the G.59 stamp dating the saucer to 1953.



The second item which can best be described as a cereal bowl with a scalloped rim rather than the usual plain rim, sold for \$99.00 Canadian. As you can see from the picture it was marked on the interior with the green bands being broken by the CPR cipher. Up until this one appeared on ebay I had only recorded one other example over the years, and it was one taken home from the plant by an employee. I had assumed that it was probably a proto-

Cont'd on page 14

Contents

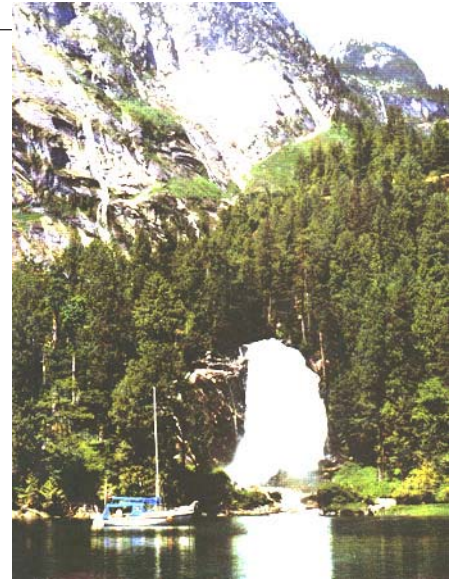
The MALIBU Club in Canada	1
Rarely Seen C.P.R. Items	1
The Malibu Club Dishes & Accessories:	7
A PATIO MADE OF BOTTLES	13
AN OWLASHTRAY	14
FOLLOW-UP	15
Hanging Baskets:	15

inlet but he did not enter himself due to the tidewaters rushing through the narrow opening. Eventually these narrows through which the tide still rushes today were named Malibu Rapids. The waters are reported to flow at some 10 knots an hour making it all but impossible to go against the flow, and you often have to wait a full day to gain entrance.

After passing through the rapids, you

enter the 6.5 kilometers long inlet that has forested mountain cliffs rising on all sides. At the end of the lake where a marine park is found today, you are greeted by the majestic Chatterbox Falls where the waters fall some thirty-seven meters to sea level. James F. MacDonald donated the land for this park in 1953.

Exposed rock faces around the inlet bear red ochre paintings (pictographs) executed by the local Indians many years ago. Fish, whale and geometric images are commonly found. Perhaps



The Medalta Review

Editor: Ronald M. Getty
216 Maddock Way N.E.,
Calgary, Alta T2A 3X3 Canada
Phone: 403-273-1132
gettyr@shaw.ca

Photographer: Collectors
Design & Layout: Tony
Hansen

Published & Distributed by:

The Friends of Medalta Society
703 Wood Street SE
Medicine Hat, AB T1A 8S9
Phone or FAX (403) 529-1070
Dianne Finch, Chairman
info@medalta.org

The Medalta Review is published quarterly in the interest of keeping collectors of Alberta made pottery informed on newly found products, current prices, history of the potteries and other aspects relating to the Alberta pottery industry. Each issue usually includes a Hycroft and Medalta section. Other columns will bring you reports regarding Alberta Potteries (Wyatt and Yuill), Athabasca Potteries, Medicine Hat Potteries (Little Chief), Medalta (1966) Ltd., Provincial Industrial Enterprises (PIE) or Sunburst Ceramics, and our question and answer column will reply to inquiries from our readers and museum visitors.

Subscription is \$25.00 per year. Back issues are available from the Friends of Medalta at \$5.00 each plus postage and handling.

Copyrighted by the Friends of Medalta Society. Reproduction of any part of this document is unlawful without written permission.





MALIBU CLUB

May 10, 1941

Mr. Tom Hulme
Medalta Potteries
Medicine Hat, Alberta

Dear Tom:

First I want to congratulate you on the recent samples which we have received since I was at the factory in February, mainly the animal vases, the new vases of which we left samples at the factory, the new Jardiniers No. 128, and also on the finish and color of such items of the new dinner ware as have been received here to date. If we can keep up this quality there will be little objection to the raises in price which we are advised are to go into effect on the first of June. It is when the customer gets a lot of pieces which are unsaleable that he objects to paying a reasonable price for merchandise. *The modelling too is splendid.*

There is on hand at the factory an order, our Number 1134, 1135, 1136, and 1137 to be made up for the Malibu Club. You have already made up samples which have been approved here ~~by~~ the client placing this order, and you are now awaiting the remainder of the rubber stamps to be used in decorating this ware.

We are expressing them to you under separate cover, together with a Printer's Brayer which Mr. Perry suggested that I might send on to you for use in applying color to the stamps.

There are in this parcel 10 stamps of various designs and sizes. *(I think the number is correct, I forgot to count them.)*

It is not intended that all these stamps be used on any one item, but that the words "Malibu Club" either in the form of the stamp which has been already sent you, or in one of the forms in which it appears on the stamps herewith, shall appear on every item, and that the remaining decorations shall be composed of some of the stamps which we are sending you.

We are sending you, merely as a suggestion because the color decoration is left to your discretion, a number of sheets giving an idea of what particular stamps can be used on any particular pieces, but these are suggestions merely, and you will use your discretion.

There is another thing in connection with the application of the decorations to which I would draw your attention and that is that where the fish on the line is used (there are five of these fish of the line stamps) they should be used in the sequence in which they are shown on the big plate amongst the sketches which I am sending you for that

it was these pictographs that inspired the designs that Thomas F. Hamilton selected for use on the dishes that he commissioned from Medalta.

While the accounts I read are not specific, one suggested that Princess Louisa Inlet was likely named after Queen Victoria's mother.

How did the Malibu Club In Canada come to be? I do not yet have all the answers or specific dates but in general it came about as the dream vacation spot for multimillionaire Tom Hamilton who made his money through the invention of the variable pitch propeller. About 1940, he acquired some 10,000 acres of land in and around Princess Louisa Inlet and set about building his dream home. Initially that is all it was to be, but somewhere along the line, he dreamed of a theme park, one to share with his friends and other millionaires. He envisioned a number of different theme log cabin villages, but the only one that was ever built was the Indian one.

In 1941, through Medalta's west coast agent, he ordered pottery for use in the cabins. He even designed the rubber stamps to decorate the pottery, shipping them to Medalta along with a few instructions, but for the most part leaving the decoration of the pieces up to the staff of Medalta.

The records indicate that to some extent the complex opened in 1942, but from then until 1946 it was effectively closed, likely due to World War II. In 1946 it reopened, but it seems that its time had come and gone as it was anything but a success, in spite of being well advertised. Some say its downfall was due to mismanagement and others that the cost was just too high, but whatever the reason it was in financial trouble and finally closed in 1951.

Finally in 1953, Hamilton sold the

venture to Young Life of Canada, a non-denominational Christian organization that offers a summer bible-camp program for teenagers. It is still in operation, and if you wish you can find out more about them by visiting their web site at www.younglife.org/malibuclub/. In part, they give a history of when they acquired the property from Hamilton. Hamilton is thought to have spent at least \$1,500,000 developing the complex, but when he sold it to Young Life, he settled for \$300,000. Later he sold his timber rights to 9000 acres for \$400,000.

Please take time to read through all of the documents and ads that I have reproduced here. They tell the Malibu Club in Canada story in much more detail than what I have given here. •

is the sequence in which they would occur in fishing. If of course an odd one of these is used in some other position it does not matter. You will note also that there are several little bear of various sizes, by using these in sequence, or by using them all at once pressed together in one hand you can get rather amusing stamps for use, for instance in the center of saucers, or fruit dishes, or round cups.

You will note there are several "Malibu Club" stamps. These also are of various sizes for use on various pieces. I hope it is possible to make a really good job of these as this client, who has drawn all these designs himself is besides being a brainy and artistic man is also an extremely wealthy one, and whilst these goods are intended for only a series of cabins which he is now building at this resort it is his intention to build a large hotel next year, and there will have been very considerable orders for these designs.

With the receipt of these stamps and sketches the matter is now in your hands, and we would appreciate this being pushed on as quickly as possible for his place opens on the first of June, and whilst it will naturally be impossible to get these finished in time owing to the delay in his furnishing us with these stamps he is desirous of getting delivery as promptly as ever possible.

To sum up, therefore, the decoration instructions first sent with the order (namely to use the design between two fine lines) are entirely washed up, instead you will decorate with the stamps which we are enclosing using your own discretion according to the suggestions also sent, using red-brown color in all decoration underneath the honey glaze. It is, of course, understood that we take the overs which you will naturally have to make, and it is, of course, further understood that you do not send ~~separate~~ as we have got a darn good price for the factory for this ware.

Yours sincerely,

Columbia-Orient Export & Import Co., Ltd.

BAC/QF

P.S. Be sure no basins plate are used; of which the bottoms have ragged, so they spin.

<<MALIBU

MALIBU

PRINCESS

INLET

CANADA>>

LOUISA

Princess Louisa Inlet Scene Of Unique Holiday Village

JUL 5 1941

By DON MASON

In Princess Louisa Inlet, 40 minutes by plane from Vancouver, an American millionaire is creating the first unit of a vacation resort destined to be a show-place of Western Canada.

The project was born in the mind of this man, who has travelled the world in search of beauty and who has found the spot he "loves best of all" within 100 miles of Vancouver.

Picture an inland waterway hemmed in by snow-capped, forest-clad mountains rising steeply from the sea. Picture in that setting three separate log cabin villages—Indian, Swiss and Scandinavian—Indian tepees, totem poles, an old-time stockade and trading post.

GOLF COURSE TOO.

And picture a ski hill 8400 feet above the Indian village, riding trails in the hills, 50 cascading waterfalls, trout streams, a golf course, tennis courts and a fleet of fast speedboats; a restaurant, electric light and power and every modern convenience, hidden by the rough exterior of log cabins.

There will be the completed project in 1942, according to its creator, Thomas F. Hamilton, founder of the Hamilton Propeller Co., and well-known visitor in British Columbia waters aboard his luxury yacht, Malibu.

Mr. Hamilton planned only a summer home on Hamillsle, an island near the entrance to the

ARCHITECTURE AS HOBBY.

Without drawings he has designed every structure so far erected.

"Architecture is a hobby of mine," he says.

Mr. Hamilton immediately installed a radio telephone so that he and his guests will be able to keep in constant touch with the outside world.

By arrangement with Canadian Airways, two planes a week will call at the resort. Union Steamship Company ships will call at a dock outside the inlet entrance.

There, on a rocky headland, will stand a replica of the Nanaimo Bastion. Indian Chief Yak "Henry" Taku will be guardian of the entrance to tell yachtsmen about the tricky currents.

Inside the inlet a promenade pier will lead up to a huge stockade and trading post. This will be the entrance to the Indian village, now partly completed.

DE LUXE CABINS.

The Indian village is to be the central one. There will be the dance hall, office and restaurant.

Mr. Hamilton calls the Indian cabins de luxe cabins. They are built of fir logs and cedar, with a rough finish. They have ultra-modern furniture and every modern convenience.

Articles made by the Indians will be on sale at the trading post and general store.

This Malibu Club of Canada, as the resort will be known, will be a membership club of a private nature open year round. Mr. Hamilton wants guests of discrimination and taste who will come back year after year.

For this year, guests need not be members.

Some of the recreations it will offer in season are: salmon and trout fishing, swimming, boating, riding, skiing, golf, tennis and big game hunting.

TEA ON TERRACE.

The restaurant will specialize in individualized French dishes, Continental style. Dinners will be served aboard yachts and a specialty will be an English tea hour on the terrace.

Mr. Hamilton hopes the resort will become a meeting place and supply base for yachtsmen. He plans to carry all manner of supplies in the store. He and his family will spend about three months of each year at a home to be built on Hamillsle.

Mr. Hamilton has spent thousands of dollars already advertising his resort in magazines throughout the United States. He expects to bring to Canada the kind of visitor who will spend the money the Dominion needs for foreign exchange.

The public is invited to attend the potlach celebration at the Malibu Club in Canada on July 16.

The millionaire has bought everything Canada could supply for the project in Canada. The furniture is Loyalist maple, the bathroom fixtures, tubs and showers are from Eastern Canada.

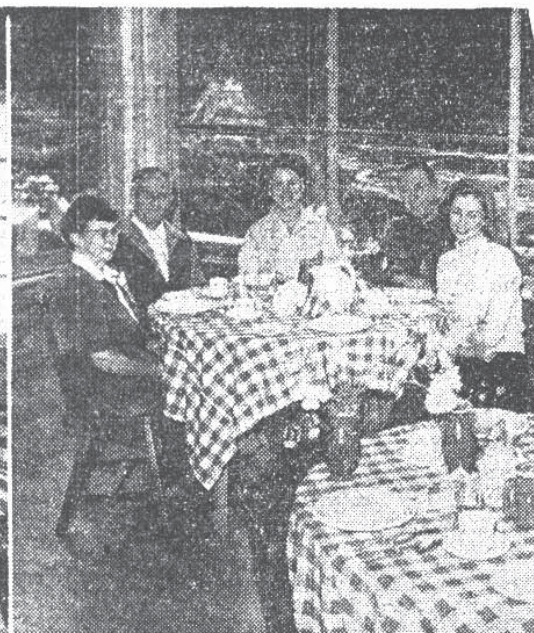
No two cabins are identical. Each is named for an Indian tribe or an animal. Indian carvings and sketches adorn walls and doors. This work is being done by Mr. and Mrs. "Bud" Graves, well-known Vancouver artists.

Ten cabins in the Indian village will be ready for guests when the resort opens with a potlach on July 16. Twenty will be completed this year. Totem poles for the village are being made by Chief Joe Mathias of the Squamish tribe and other Coast Indians.

Malibu Playground, Where Guests



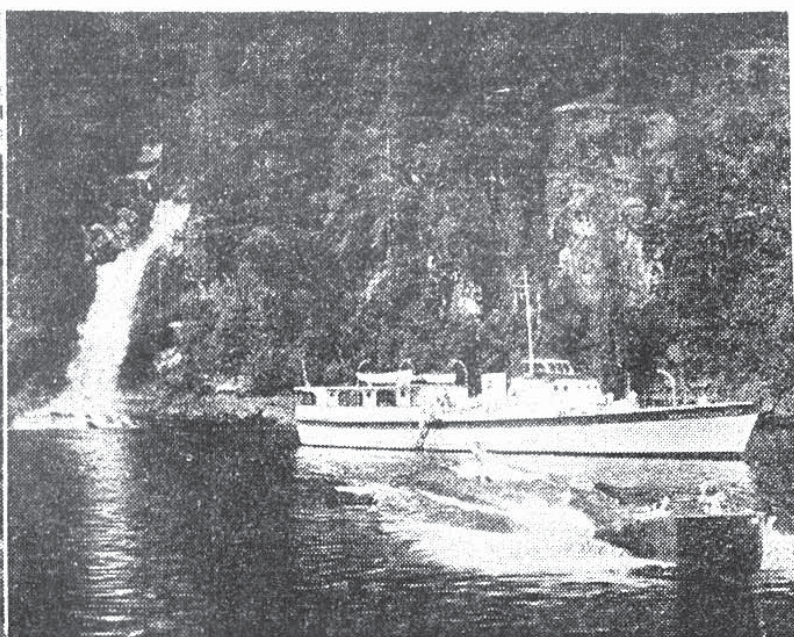
JUL 19 1946



British Columbia's beautiful playground, Malibu Club, spread along the timbered slopes of Princess Louisa Inlet, and pictured above, is rapidly nearing completion and will be ready to welcome an influx of guests by August 1. Accommodations will be provided for up-

wards of 85 visitors who are expected to come to this scenic spot from all over the continent. As many as 20 guest yachts have been handled on busy nights at the club, and the inlet is rapidly gaining favor as a destination for B.C. and U.S. yachtsmen.

Will Dine, Golf, Cruise Next Month



At left, in the layout above, is a portion of the colorful main lounge of Malibu Club. The second picture shows a corner of the main dining room overlooking Princess Louise Narrows, which is on Jervis Inlet. The third picture shows one fairway and a green on the short

nine-hole golf course adjoining the club. The fourth scene is of Chatterbox Falls at the end of Princess Louise Inlet, with the 112-foot luxury yacht and one of the fast Chris Craft speedboats, of the club's 65-vessel fleet, in the foreground.

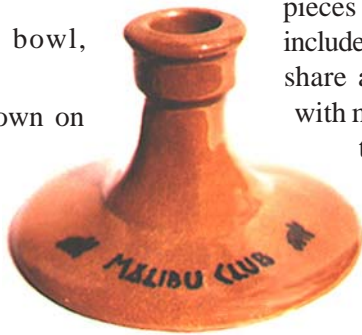
JUL 19 1946

The Malibu Club Dishes & Accessories:

It is, of course, the dishes that are of primary concern to us, and those we will now examine in depth. For the most part I am going to keep my descriptions to a minimum and let the pictures of the pieces do the talking. To start with I will give you a quick listing of all the different pieces that I have recorded to date. As you will see, it is one of the most extensive line of products that you will see find anywhere.

Restaurants that ordered specially named or decorated wares were often limited to the basic service wares with few accessories such as candlesticks, vases, etc. Not so the Malibu Club in Canada. It almost appears from what I have seen that Hamilton wanted one of every product in Medalta's extensive hotel china line.

- dinner plate, brown on cream
- side plate, brown on cream
- butter pat, brown on cream
- rimmed cereal bowl, brown on cream
- oatmeal bowl, brown on cream
- small oval baker
 - ribbed bottom style, brown on cream
- demitasse cup and saucer, brown on cream
- Kermis style of cup and saucer, brown on cream
- Chicago tall teapot, black on beanpot brown
- Harmony hot water pot, black on beanpot brown
- gravy boat, brown on cream
- olive tray (perhaps used as a gravy boat stand), brown on cream



- large ice water jug, brown on cream
- individual ice water jug, black on beanpot brown
- jam jar (bean pot shaped), brown on cream
- mustard pot, black on beanpot brown
- individual sugar bowl, brown on cream
- Elite style pitcher, brown on cream
- handled creamer, brown on cream
- vase style no. 95, not known
- Stetson hat, brown and/or black on honey
- candlesticks, brown on cream and black on beanpot brown

In spite of the extensive nature of this listing, I am sure that there are other products still to be found. It seems likely to me that they had an oval plate, a salad bowl, a vegetable serving bowl and perhaps even a tankard style milk jug. Please let me know about pieces that you have which are not included in this listing, and if you can share a picture of that piece with me, I would welcome

that too to include in our follow-up section.

That the pieces were decorated with rubber stamps is made quite clear in the letter that I have reproduced here, and by the fact that a large number of the Malibu Club rubber stamps have survived. Several private collectors have acquired

some of the stamps, as has the Friends of Medalta Society and the Glenbow Museum.

The impressions of a bow, hooked fish, tipis and the stick-

dian riding a horse and firing his gun are all from rubber stamps in the Glenbow collection. The round rubber stamp and its impression shown here is in the FOMS collection, and by its size it was likely used to stamp the 10-inch plates. A similar stamp was used to decorate the side plates differing only in being a bit smaller in size of lettering, overall diameter and in not having B.C. included after Malibu Club In Canada Princess Louisa Inlet.

The pieces shown here pretty well show all the designs that I have run across. In addition to the ones mentioned above you can find a grouping of three deer (stick figures), three different bears, a northwest coast style of dugout canoe filled with warriors and the comic figure of a happy, smiling Indian with an exaggerated thumb in the air. This figure can be found facing either left or right, and he is usually associated with the words "Kla-Ha-Ya" which I can only hope says something like "Thumbs Up to Malibu" rather than what first comes to mind. In addition, the Indian figure can be found with "Naka Tilikum" arced above as found on the oatmeal bowl or cup saucer. Once again I do not have any idea what this means, but I did notice that one of their yachts was named the Malibu Tillikum.

As you can see from the letter to the Medalta factory, the instructions as to how the dishes were decorated were for the most part left up to the staff. All

Hamilton requested was that each piece have "Malibu Club" somewhere on it, and where appropriate "In Canada" and "Princess Louisa Inlet" be added. I have in fact recorded several pieces without Malibu Club on them. Two of these



were the regular 6-inch cup saucer and the small demitasse saucer, but in both instances the matching cups had the Malibu Club name on the side. The other unnamed piece was the small butter pat, and perhaps there simply was not room for the name along with the decoration.

While I have recorded some thirty or more Malibu Club pieces, I have only observed a few that were identical, namely hat ashtrays and candlestick holders. More often, the design was different.



As you can see from the picture of the side plates shown here, one was decorated with the series of fishing designs while the other used the tipis and dug-out canoe design. Similarly, the decorations on the cereal bowls differed with one using the bear designs and the other the dugout canoe and hunting Indian designs.

Even the small oval baking dish, which is a seldom seen product at the best of times, had different designs on the specimens that I recorded. The one was rather unique in that it said "Chicken Pie" on one side and "Malibu Club/In Canada" on the other. The second specimen just said "Malibu Club" and was used in conjunction with the longboat and arrow designs.

Another hard to find item is the individual sugar bowl (aka as the miniature unhandled chamber pot and at times a sake cup). Once again both recorded specimens differed in the decorative designs used. The one shown here had the tipis design on the side opposite to "Malibu Club" while the other, for which I do not presently have a picture, was decorated with one of the fish-on-line designs opposite the naming.

In checking my notes, I found that I had recorded four samples of the hat

ashtray. Three of these had "Malibu Club" placed horizontally across the front of the hat with no other decoration while the odd one out had "Malibu Club" arced at the front with the three bears decoration at the back.

The widest variety of decorative designs has been found on the candlestick holders. Only one of the samples that I have recorded was finished in the brown on cream. On this specimen, "Malibu Club" was slightly arced at the front, at the back was the dug-out canoe decoration and

an arrow was placed at each side.

The other specimens were finished using black against a beanpot brown. As you can see from the pictures, all three are decorated with a bear at each side of the naming. The one with the arced Malibu Club

has no decoration at the back while the other with the horizontally placed naming, found as an identical pair, has the tipis decoration at the back.

For the most part the wares are all finished with brown to reddish-brown naming and/or decoration on a cream background. And when not in these colours, they are invariably finished with black naming and decoration on a beanpot brown. On the product listing above, I have recorded the colours that are found on the pieces. The only item I am not sure of is the vase as all I have is an old black and white print. It appears to be so dark that I suspect that the naming and fish design is in black against a beanpot brown. In the picture shown here, I have accented the naming in an oval in order to lighten

the image so that it will print legibly in the newsletter.

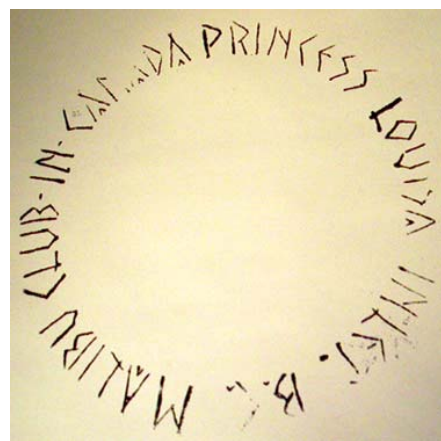
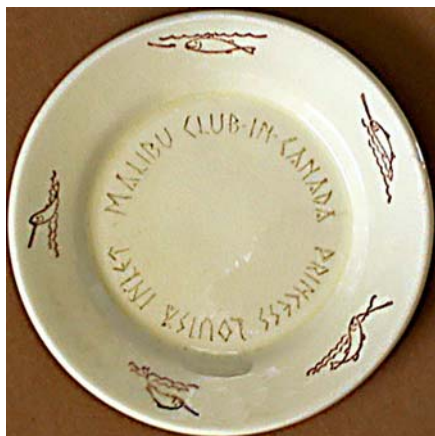
The Medalta stamps found on the pieces include G.33, G.47.a and G.51 consistent with a production period from 1941 to 1950. The only other stamp found on Malibu pieces is the G.31 or Registered Design stamp that was used on the hat shaped ashtrays.

That Medalta had some production problems is apparent from the pieces that have survived. Some of these were obviously factory seconds as the brown naming is very light perhaps due to over firing (see the Elite pitcher), while others have considerable smearing of the image. The gravy boat for example is decorated with what appears to be the bow and arrow decorations, but they are so badly smudged that one can hardly make out what they are.

In closing I would like to draw your attention to the 10-inch dinner plate. As you can see from the picture shown here it has a repetitive design comprised of the tipi cluster, the bow, an arrow and two Mounted Indians with rifles in hand chasing a group of six deer. It is perhaps the busiest design that you can find on a Malibu Club piece

and for me, due to my interest in the archaeology of the Plains Indians, one of the most attractive pieces. •







FOR the MOST EXCITING VACATION of a LIFETIME

MALIBU sportsmans' paradise

Malibu Club is set in the gorgeous, unspoiled fjord of Princess Louisa Inlet... five boat hours from Vancouver. A never-to-be-forgotten vacation land. Enjoy your favorite recreation amidst the world's most beautiful scenery.

*Tyee Salmon Fishing *Trout-filled Streams
*Speed Boating *Swimming *Aqua-planing
*Short, Sporty, 9-hole Golf Course *Mountains
Climbing to Glacier Snow Fields.

Deluxe Accommodations, Rooms Single or En Suite,
American and European Plan.

CRUISE to the wonderland at Malibu on a yacht of your
own selection from the Malibu Yacht Charter fleet.

FLY to Malibu and view the 10,000 wooded acres of B.C.'s
newest resort via Malibu Scenic amphibious planes.

For transportation and reservations write or phone:
1927 West Georgia Street, Vancouver, B.C.
Marine 7857 Pacific 7354

JUL 27 1946



Just the Spot For Loafer or Sportsman

JUN 11 1949

Rustic in appearance, but luxurious in appointments, sea-girt Malibu nestles at the foot of steep mountains amid primitive forests and tumbling streams. Rich in native lore, Malibu is a deluxe Indian encampment, with lowering totem poles, a small tepee community, and a trading post equipped to supply the natives of the district and yachtsmen cruising in from far off places.

The clear waters are teeming with fish just waiting to be caught, but for those who prefer golf there is a short but sporty 18-hole course climbing the side of a mountain and skirted by towering trees and banks of wild flowers.

Only 100 miles north of Vancouver, this is indeed a vacation land "out of this world" with a diversity of activities to be enjoyed in unsurpassed scenery, be it swimming, exploring the mountain trails, or just plain loafing in the sun.

\$1,000-A-Day Luxury Yacht Visits Harbor

MAY 24 1947

Bound for Los Angeles, the trim, 110-foot yacht, "Malibu Tillicum," chartered for a fishing cruise at \$1,000 a day by American millionaire Frederick W. Leadbetter and a group of friends, has docked in North Vancouver.

The luxury yacht was a Canadian navy Fairmalle sub-chaser during the war, and was recently converted for charter trips by the Princess Louise Inlet Malibu Club.

She comfortably accommodates 24, including the crew of nine.

Mr. Leadbetter, a member of the Royal Vancouver Yacht Club, was once financial advisor to Henry Kaiser, famed American industrialist.

6 *** THE VANCOUVER SUN: Friday, June 20, 1947

Drive to Boost Malibu Planned

JUN 20 1947

Civic, Tourist Officials Impressed During Inspection Trip to Resort

A concerted effort to dispel the web of rumor and mystery which has been spun about the million-dollar Malibu Club resort on Princess Louise Inlet, was promised Thursday by Vancouver civic, tourist and automobile officials.

A Wednesday-Thursday sea trip to Malibu, by three city aldermen, other members of the Vancouver Tourist Association, B.C. Automobile Club and press representatives, convinced the party the resort is one of B.C.'s greatest potential tourist attractions.

This is the first time the Malibu Club, carved out of the wilderness by wealthy Californian Thomas Hamilton, has been thus opened to inspection by Vancouver officials. The club opened officially for the season this week.

AGREE TO HELP

Enthused over what Hamilton has done and what he plans to do, and thrilled by Princess Louise Inlet's alpine-like scenery, the Vancouver officials agreed at two conferences during the trip to do all they can do to make Malibu one of B.C.'s major tourist spots.

First concrete steps will be a move by these officials to seek a club liquor license for Malibu, and to get Princess Louise waters closed to commercial fishing.

"I have never been confronted with so many rumors and so much misinformation about a place as here," Mr. Hamilton told the assembled party in his huge rustic dining hall, perched on a rock at the mouth of the Inlet.

"I've heard that I had a chain

stretched across the inlet mouth, for instance, and that I wouldn't let anyone in unless he paid \$5. I've also heard that it costs \$100 a day to stay at my place.

"I can't help feeling there is some reason for all this.

"That is what has bothered me most here—the propaganda, the rumor, about myself and about Malibu. Many think this is a hobby. It's by no means a hobby—I expect to make a success of it."

H. S. Hipwell, president of Vancouver Tourist Association, told the group: "Here's an American who has come to Canada and invested heavily, because he has faith in B.C."

Alderman Charles Thompson emphasized the point: "Let us not just accept Mr. Hamilton's hospitality and then let the matter drop. Let's really do something to help him, and B.C."

WRAP UP YOUR VACATION in AUG 13 1949 MALIBU PACKAGE PLAN

We're full now, but from Aug. 15 until our closing date Sept. 5 we can accommodate a limited number of guests. For \$100.00 each, 2 in a room, you can spend a memorable week at Canada's outstanding vacation spot. This includes transportation by boat or plane, meals and all recreational facilities.



Don't miss this opportunity for a vacation of a lifetime. Call Pacific 7354 at any hour or call at our office at 1927 West Georgia, Vancouver, for further information and reservations.

BEFORE LEAVING B.C. VISIT FABULOUS

JUL 15 1949



FOR THE VACATION OF A LIFETIME

This outstanding vacation-spot, truly "out of this world" at beautiful Princess Louisa Inlet, long familiar to visiting yachtsmen, a fjord surrounded by majestic snow-capped mountains is just 100 miles from Vancouver—easily accessible by Malibu Amphibian plane—45 minutes—or by boat—8 hours. Our rates start as low as \$4.00 per day per person, European Plan, two in a room, with adjoining bath.

Enjoy your favorite sport in this incomparable setting, fishing, golfing on our sporty little 18-hole golf course, paddle tennis, swimming, boating, water skiing, and other forms of entertainment. All this is yours just by picking up the telephone and calling Pacific 7354 or by dropping into our office at 1927 West Georgia Street for further information and reservations.

B.C. BEAUTIFUL —AT \$250 DAILY

Even at \$250 a day British Columbia is beautiful!

That's the conclusion of two California tourists who recently chartered a 112-foot luxury yacht from Malibu Club and cruised B.C. waters for three weeks.

It cost Lyman and Felix Farwell, orange grower and broker respectively, \$250 a day—almost \$6000.

But in a letter to Thomas Hamilton, owner of the famed Malibu resort, they justified the expense. The B.C. coast, they wrote, has "the most beautiful cruising territory" they have ever seen.

AUG - 5 1947

A New Life For For Malibu

WAS millionaire Thomas Hamilton being guided by the divine hand of the Lord when he built his fabulous Malibu Club near the upper end of Jervis Inlet? It may very well be that he was. About 15 years ago Hamilton started to construct the most luxurious resort that the coast of B.C. has ever seen.

Then, almost two years ago, the Young Life Campaign Inc., a non-denominational religious group which mixes Christian teaching with holidaying, bought Malibu for a youth camp. This summer, for the second consecutive one, high school students will pay \$35 a week to enjoy what was once a millionaire's playground.

UP THE COAST

JUN 18 1955

Sixty miles up coast from Vancouver, nestled in the cradle of 7,000 foot mountains, is lagoon-like Princess Louisa Inlet. The Indian name for this smooth-surfaced inlet is "Suivoolut" which means "sunny and warm." Princess Louisa Inlet is an ornate jewel set well back among the glittering fjords of B.C.'s rugged coast. The inlet has an average width of two-thirds of a mile, is four miles long and drops to 1,000-foot depths in many places. It is confined on three sides by sparsely timbered slopes which melt into sheer rock cliffs, cliffs which reach for the heavens in 7,000-foot grasps, capped by ice and snow.

In the early months of the year spring releases these peaks of part of their burden and waterfalls some large, some small, come cascading and spraying down into the calm water below. This naturally protected harbor is accessible by a narrow gap of water, about 60 feet wide. At times the tide roars and rushes through this opening at speeds up to ten knots, allowing boats to enter only when the tide is slack, or not rising or falling. It was here at the place where the sparkling waters of Jervis and Princess Louisa inlets meet that Hamilton chose to spend \$2,000,000, an estimate of the cost of his dreams.

Hamilton envisaged a number of small camp sites each patterned after dwellings of other nations; Swiss, Scandinavian, Native Indian, etc. He actually only completed one, in rustic Indian style, replete with weapons, Totem poles, gourds, hand-woven rugs, carvings, and other ornaments of native Indian heritage. His imagination included a ski lift to a 4,000-foot plateau where horseback riding and skiing could be enjoyed year round. Barge load after barge load of sand was imported and dumped along the shoreline to make a beach. Above this man-made seashore the millionaire carved a nine-hole pitch-and-putt golf course, a volleyball court and a tennis court.

COSTLY LIVING

Millionaires and Hollywood stars visited this secluded socialite retreat paying sometimes up to \$250 per day for accommodation, food, liquor, speed boats, private yachts, and the other types of recre-

ation offered at Malibu. For some strange, inexplicable reason Hamilton's venture failed. Some say because of poor management, some say because of exorbitant prices. Whatever the reason the Malibu closed her doors to the public and lay idle for a long time. For many months the gaunt, lightless eyes of windows stared out upon an empty dock. The bar, which once rocked to laughter and song, now had only the winds to sigh through her deserted porches. The imported sand drifted slowly away, grass overran the golf course, the tennis court painfully sagged and cracked.

To those who love the sea and who have a tender spot in their hearts for boats, something just short of murder happened to the sleek yachts and speedboats. Many of these speedboats were shipped to the Malibu wrapped in cheesecloth so that their french polished hulls would not be marred. These beautiful creations of mankind were left to the mercy of the elements. Mother Nature, with all the fury of winter at her beck, stripped paint and varnish as one would peel an orange. Winds ground the smooth woodwork, often caressed by human hands, against wharf and rock until pulpwood resulted. Boats were driven ashore by wind and tide, were smashed, sunk.

Then the Young Life organization, founded in USA and dedicated to salvation, decided to save Malibu from destruction and turn its beatific atmosphere into a stream from which might flow many great contributions to society. Young Life has given a new life to this millionaire's trysting ground. Young Life is a youth organization devoted to bringing High School students from United States and Canada into closer contact with the spiritual side of life. It is not a religious movement in the generally accepted sense of the word. It purchased Malibu from Hamilton and while the purchase price is still undisclosed, rumor has it that the cost was less than \$300,000.

TWO SUMMER MONTHS

Malibu will be open from July 6 to August 24. Any student in Grade 10, 11 or 12 may spend a week at this camp which defies description, for the ridiculously low sum of \$35; a week of mountain climbing, swimming, water-skiing, singing, werner roasts, ping-pong, loafing, or what have you. Approximately 125 people can be accommodated each week. Most of the visitors make their arrangements through Young Life group in their school although this is not mandatory. A special boat will leave Vancouver each week and will take the campers to Malibu. The same boat will bring returning campers back to the city.

The esthetic value of Malibu is being put to good use. Teenagers can now enjoy this wondrous section of B.C.'s superlative coast line and at the same time have the basic tenets of Christianity translated and interpreted into terms that they will understand and appreciate.

Timber at Malibu Brings \$400,000

Millionaire propeller manufacturer Thomas F. Hamilton, who once visualized a luxury tourist resort at upcoast Princess Louisa inlet, has sold 9,000 acres of his timber holdings for a reported \$400,000.

Three years ago he sold his posh Malibu Club at the head of the inlet, about 100 miles upcoast from Vancouver, to a non-denominational religious group, Young Life Campaign Inc.

Purchaser of the timber, estimated at 50,000,000 board feet, was not disclosed. The buyer was represented by the Royal Trust of Vancouver and A. E. Banton and Co., a timber brokerage firm, represented Hamilton who lives in Los Angeles.

FEB 11 1956

ISLAND RETAINED

The 9,000 acres was part of the huge resort, conceived 15 years ago by Hamilton.

The industrialist retains a small part of his original holdings including an island bearing his name.

Taking an arbitrary figure of \$75 a thousand for logs, the Hamilton holdings would be worth \$3,750,000.

It is believed Hamilton plowed between \$1,500,000 and \$2,000,000 into his millionaires' mecca which was to include camp sites patterned after dwellings of many nations. Actually, he completed only one in luxurious but rustic appearing Indian style.

HEAVY LOSSES

He built a pitch-and-putt golf course. Among the planned additions was a ski lift.

At the time of the sale to Young Life, it was said that Hamilton received less than \$300,000.

This would put his loss at \$800,000 to \$1,300,000.

MALIBU RESORT SOLD JAN - 8 1954

Luxury Lodge to Be Bible School

Malibu Club, million dollar luxury resort on Princess Louisa Inlet, has been sold to a U.S. religious organization for use as a summer Bible camp.

Developed and opened in the 1940's by aircraft magnate Tom Hamilton, of Los Angeles, the resort was sold to the Young Life Campaign, a non-denominational religious group of Colorado Springs, Colorado, for an undisclosed sum.

The Young Life Campaign is bible study group of high school age youngsters headed by Presbyterian Rev. Jim Rayburn.

Officials say they plan to accommodate 300 campers a week on a co-educational basis at the 10,000-acre estate 75 airline miles north of Vancouver.

The resort opened with a great fanfare in 1946 when propeller maker Hamilton created the fabulous establishment as a playground for tired millionaires.

A fleet of 20 small craft including runabouts and a \$250 a day, 112 foot cruiser were available for charter.

The Young Life Campaign expects to hold its first camp session at the site in July.

told me that not one of the bottles that he dug up had the Medalta name on it.

What did he find? Mostly Gurd's bottles but a good variety of others as well. These are the ones he reportedly found:

J. Christin & Cie Limitee with a light brown top

Gurd's with a green top

Gurd's with a brown top

King Old Country with a dark brown top

Phillip's with a brown top

Thorpe's with a dark brown top

Ye Old Country Club by Felix Distributors

Most were actually in very good condition, thanks to the fact that stoneware is relatively indestructible. Once glazed and fired, it is almost immune to damage by acids and it was apparent that the soil in which this cache was placed had no effect on the bottles. Once the bottles were cleaned up Roy sold them all across Canada, many going in fairly large lots to dealers. He told me that he got from \$35.00 to \$45.00 each and to quote Roy they "paid for my house". At the price for houses today that seems hard to believe, but then I only paid \$22,500 for my home in 1973.

The only picture of the bottles actually comprising part of the patio that I have to share with you is the group view of green top Gurd bottles that are displayed on shelving. The second group view is a modified view taken from Medalta's 1924 Catalogue. From left to right it shows a generic bottle, a McLaughlin's, a King's and a Gurd's.

I have not yet had a chance to see the house that was paid for by ginger beer bottles, but I will. The next time I am in Medicine Hat, I will make it a point to drop by 953 Queen Street S.E., but I likely will not ring the doorbell as Roy now lives in B.C. Apparently the house is located on the flats, only a few blocks from the Medalta site itself. •



CPR Items: Cont'd from page 1

type that never went into production, but that was apparently not the case as the seller reported that he acquired his specimen directly from the CPR Archives in Montreal when



they disposed of much of their collection.

The bowl measures about 6½ inches in diameter and stands about 1¼ inches high. It was marked with the G.56 stamp dating it to 1952. •

AN OWL ASHTRAY

The small, round flat ashtray decorated with the black silhouette owls is rarely seen. Till now I had recorded only two examples, one like the piece shown here and the other advertising Bradley's Taxi of Edmonton. If anyone had asked me what this one might sell for on ebay I would have said around \$250.00 Canadian. But how wrong I would have been, as it sold for about \$510.00 Canadian!

I do not know its measurements, other than being around 5½ -inches in diameter. It was marked with the G.23 maple leaf stamp as were the other two recorded specimens, and its colour was the usual black on honey.

Congratulations to the new owner as it is indeed an excellent addition to anyone's collection, and for him a special prize as he already has the best collection of Medalta pieces decorated with the silhouette owls. •



FOLLOW-UP**Cookie Jars:**

I had an interesting email from Tony of Bow Island who advised me of a cookie jar that he has in his collection with the name BILL inscribed in the base. More accurately, the name is embossed in the bottom as the letters comprising the name Bill stand slightly above the level base. What was more important than the actual marking itself though was the fact that he knew the story behind the marking.

This is what he told me when I called him to get more information.

On one of several visits that Bill Wyatt, son of Jesse William Wyatt, made to Tony's home, he was shown the cookie jar with the name Bill on the bottom. Much to Tony's surprise, and Bill's delight at seeing one after so many years, he found that he was showing the cookie jar to the person that had scratched his name into the bottom.

Back in those days, around 1930-1931, the employees of Medalta were paid by the piece and some of the other workers were questioning that he could make so many items in one day. They thought that his father was favouring Bill and paying him for items that he never produced, and in spite of Bill's protestations, his fellow workers would not believe him. Thus he set out to prove to

them that he was indeed faster than they were.

Bill grabbed a sharp implement, and with it he carved his name into the bottom of every cookie jar mould that he worked with, and thus was able to prove how many pieces he made that day.

The story certainly sounds plausible and is supported by the fact that the name is both backwards and in raised or embossed letters, exactly what one would find if a person scratched their name into the bottom of the mould.

I wish that I had been there to hear the story firsthand as it likely would have resulted in my asking a few more questions such as how many cookie jars could you make in a day? How much were you paid per piece? Did you later repair the moulds and if so, how?

I suspect that the moulds must have been promptly repaired following Bill's proving his point or otherwise we would likely see many more cookie jars with the name Bill on the bottom. I presume that repairing the mould was as simple as filling in the scratched name with some plaster.

I personally have not seen a cookie jar marked in this manner, but admittedly I never looked at the bottom of every cookie jar that I examined have seen over the years, and Tony advised me that he is aware of at least one other. There may well be others out there as well, perhaps in the collection of one or more of our subscribers. •

**Hanging Baskets:**

This little brochure was among the many paper goods that comprised part of the Mac McArthur collection, and thanks to Basil I can share it with you.

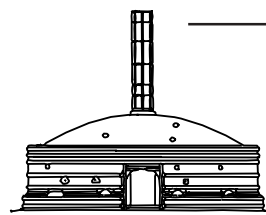
The production and sale of hanging baskets, fern pans, Azalea pots and flowerpots was a significant part of Medalta's business as indicated by the fact that such sales were recorded separately in the company's sales ledger covering the period 1928 to 1936. Basically, the ledger was divided into three parts recording the stoneware, artware and flowerpot sales, and while I have never taken the time to add up the actual figures, I am sure that the flowerpot sales must have been at least a fifth of their total yearly sales.

This brochure, printed on greenish paper and folded in three, measures 6¼ inches high and 10-inches long when fully opened. As you can see it is dated 1936, the heart of the Great Depression. While I have seen other documents listing flowerpots, etc., this is the only separate brochure that I have ever seen, and it was indeed a surprise to see the prices.

For example, look at the 4-inch standard, red-clay flowerpots that were listed at \$15.00 for 1000 pots; that works out to only 1½ cents per pot. You have to wonder how they could make money at that rate as the clay had to be mined and prepared before production could even begin, and all that followed by the kiln/firing expenses. At least they had no further expenses due to glazing or stamping the company's name on the pieces.

Also, I love that crating charge. Crates 75-cents each! Today, you cannot even get a single board for that price, never mind the labour charges for building it.

As a final note, I should mention that I do not yet know the date of the price changes as given in pencil notations beside the 1936 price. •



Friends of Medalta Society

703 Wood Street
Medicine Hat, Alta
T1A 8S9 Canada
Phone 403-529-1070
FAX 403-580-5868
<http://www.medalta.org>

Straight Rimless Liners

Size	Price per 100
5 inch	3.25
6 "	3.75
7 "	5.00
8 "	8.00



Azalea Pots
For Ferns

Size	Price per 1000	No. in Crate
5 inch	\$21.00	320
6 "	32.00	200
7 "	47.00	126
8 "	74.00	72
9 "	105.00	48
10 "	145.00	35

Florists

The demand for Medalta pots is increasing each year owing to the porosity of the pot and the smooth finish which enables the florist to use these pots a number of times. Always order, if possible, by the carload to save crating charges and extra freight. Carload pots take 6th class rate and crated pots 3rd class.

PRICE LIST ON STANDARD FLOWER POTS Etc.



Manufactured by

Medalta Potteries
LIMITED

MEDICINE HAT, ALBERTA

Canada's Largest Pottery Manufacturers

PRICE LIST

MARCH 1st, 1936

F.O.B. MEDICINE HAT
PLUS SALES TAX

Prices Subject to Change Without Notice

TERMS OF SALE

Terms:—2% 30 days; Net 60 days.

Crates 75c each.

Claims for breakage or shortage must be made within five days from receipt of goods.

We will be pleased to furnish any information in regard to freight rates and weights to any point in Canada.



Fern Pans and
Azalea Pots
in all Popular Sizes.



Standard Pots

Size	Weight per 1000	Price per 1000	No. in Crate
2 inch	200 lbs.	\$ 6.50	2500
2½ "	320 lbs.	8.75	1500
3 "	375 lbs.	11.00	1000
3½ "	500 lbs.	13.00	670
4 "	750 lbs.	15.00	500
4½ "	1150 lbs.	19.00	330
5 "	1260 lbs.	21.00	320
6 "	1750 lbs.	32.00	200
7 "	3000 lbs.	47.00	126
8 "	4000 lbs.	74.00	72
9 "	6000 lbs.	105.00	48
10 "	8500 lbs.	145.00	35
12 "	10500 lbs.	460.00	12
14 "	16000 lbs.	660.00	12

Crates packed for shipping weight approximately 450 lbs.

Mixed crates to suit customers.



Hanging Baskets

Size	7 inches Deep	Price per doz.
8 inch		1.40
10 "		2.00
12 "		2.35
14 "		2.60

Saucers

Size	Price per 100
4 inch	2.00
5 "	3.00
6 "	5.00
7 "	6.00
8 "	8.00
9 "	10.00
10 "	12.00
12 "	25.00

Fern Pans

Size	Price per 1000	No. in Crate
6 inch	\$32.00	200
7 "	47.00	126
8 "	74.00	72