

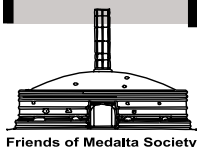
#6

Summer
1999

The Medalta Review

(A newsletter for Collectors of Alberta Made Pottery)

Celebrating
Alberta's
Ceramic
History



Friends of Medalta Society

In Memoriam

On May 28, 1999, we lost one of our most valuable information resources when Edward Phillipson passed away in the city of Medicine Hat. As most of you already know, Ed Phillipson was superintendent of the Medalta plant from 1937 until 1953, just a few months before the plant fired its last kiln load.

Obituary: Medicine Hat News



PHILLIPSON - EDWARD

Mr. Edward Phillipson passed away on Friday, May 28th, 1999 at the age of 88 years. Edward leaves to cherish his memory his loving wife of 54 years Raye of Medicine Hat; one daughter, Rosemary (Gerald) Nemanishen and their children, Jeremy and Etienne of Mission, British Columbia; one son, Mark (Jolayne) Phillipson and their children, Curtis, Aaron, and Douglas of Medicine Hat; as well as a host of nephews and nieces. Ed was born on February 27th, 1911 in Lithuania. He received his early education in Saskatoon, graduating with the degree of Ceramic Engineering and Chemistry from the University of Saskatchewan. Following graduation he was in charge of a Geological Survey with the federal government. In 1936, Ed came to Medicine Hat as manager of Medalta Potteries. In 1940, he joined the South Alberta Regiment and in 1942 was transferred to an officer's training and military science school. After graduation he was placed in charge of the supply of dishes for the armed forces. Upon receiving his honorable discharge in 1946 he returned to his job with the potteries. In 1954, he accepted a job with Northwest Nitro Chemicals in the construction of the plant and later as a supervisor of maintenance until his retirement. Ed was a member of five Masonic orders serving as worshipful master in four of them, and playing in the Shrine band for a number of years. He was also a member of the Canadian, American, and British Engineering societies, and some of his research was published in the Canadian Journals. He was a past president of the Golden K Kiwanis club, and a member of the Royal Canadian Legion. Ed was a life member of the Alberta Motor Association and Fifth Avenue United Church, serving for many years on the church board. Ed enjoyed hunting, fishing, golfing and tennis. His favorite hobby was stained glass, his beautiful pictures and lampshades are very well known in Western Canada. The funeral service will be held in the FIFTH AVENUE MEMORIAL UNITED CHURCH, 4th Street at 5th Avenue SE, on Tuesday, June 1st, 1999 at 1:30 p.m., with Reverend Sidney Vincent officiating. Interment will follow in the family plot at Hillside Cemetery. As an expression of sympathy those wishing to remember Mr. Edward Phillipson may do so with a gift to the Friends of Medalta, 703 Wood Street SE, Medicine Hat, Alberta, T1A 1E9. Funeral arrangements are entrusted to SAAMIS MEMORIAL FUNERAL CHAPEL AND CREMATORIUM, "The Chapel in the Park," locally owned and directed. Should you wish any additional information, please telephone 528-2599.

According to the obituary in the "Medicine Hat News" Ed was born February 27, 1911 in Lithuania. I do not know the exact year that he came to Canada but apparently it was around 1925, and he came alone, as his parents had both been lost in the Great War. He settled in the Saskatoon area where he went to high school and then on to University. At some point in time, Ed decided to pursue training in engineering and successfully completed the required courses to graduate with a degree of Ceramic Engineering and Chemistry from the University of Saskatchewan at Saskatoon.

After a brief stint with the Geological Survey of Canada, Ed Phillipson joined Medalta in late 1937. His arrival came at a critical time in Medalta's history as most of its employees, including senior personnel such as Karl Baumler and Walter Armstrong, were leaving Medalta to join the staff of the soon to be opened Medicine Hat Potteries. In one of my interviews with Ed Phillipson over the years, he told me that Medalta's staff was down to about fifteen employees when he took over. Not only that, but the plant was in dreadful need of upgrading and modernization if it was to remain open and profitable.

While most men would have walked away from the mess that revealed itself on the tour of the plant, not Ed. Perhaps he was just too inexperienced to know better as he had only recently



obtained his degree and not yet taken a permanent job, and perhaps his age had something to do with it as well as he was just 26 years old. Along with the job offer came the promise of about a quarter of a million dollars to refurbish the plant, and that coupled with the challenge of getting the plant back in operation was enough to sway him.

There is no doubt that it was Ed Phillipson that saved Medalta from obscurity. His accomplishments were many and quite remarkable, particularly when one knows how much work was accomplished within the first year of his tutelage. Kilns were rebuilt and modernized, a new bright white lining was developed for mixing bowls, casseroles and pie plates and a whole new

line of hotel china was developed once Ed had established the white burning clays found at Willow, Saskatchewan, as suitable for producing vitrified hotelwares.

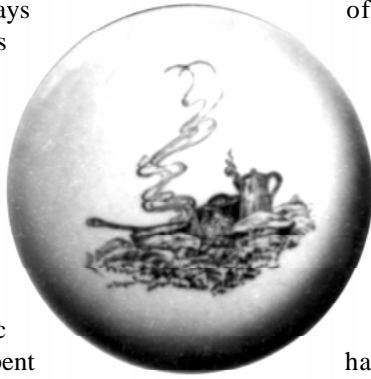
Ed's training as a ceramic engineer was just what Medalta needed in late 1937 as it was the development of the hotel china line that saved the plant from closure. Over the next couple of years Ed tested and re-tested his glaze mixtures and his blends of white clay to find the right match for the glaze



Contents

In Memoriam	1
Hycroft's 14 inch Platter	3
A Well Kept Secret	5
A Couple of Prizes	7
Medalta's Ogilvie Ship Style Pitchers	7
Questions & Answers	9
Exhibitions	9
Classified Ads	10
The Harmer Auction	10
Get This Newsletter on the Net	10
Sunburst & Medalta Catalogs on CD	10

and body. He was always running test samples through the kiln, some in the hottest areas and others in the coolest parts of the kiln, to find the right temperature for a particular clay body and/or glaze. While I do not know much about the specific details, I know that Ed spent a lot of time perfecting the green banding found on hotelwares, that he perfected a yellow glaze that remained bright after being fired at vitrification temperatures (a feat that the British ceramic industry had not been able to do). This led to capturing the hotelware orders



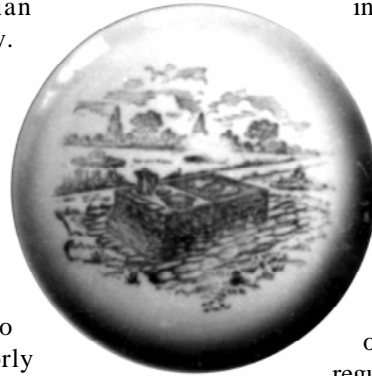
of the Canadian National Railway.

He also developed a machine for making handled cups in one operation that not only saved time and loss due to handles being poorly

applied, but resulted in a stronger and sturdier product. This invention, the Sanitas Handle Cup Machine, was one of the few assets that had a substantial value when Medalta finally closed its doors. The rights to this process and machinery were sold to an American firm for \$110,000.

For those who would like more information about Ed's accomplishments, I would refer you to the book "Pottery in Alberta: The Long Tradition" by Marylu Antonelli and Jack Forbes, University of Alberta Press, 1978, pages 87 onward. Also, I have reproduced the obituary from the Medicine Hat newspaper which gives some additional personal information.

None of these sources, however, really do justice to Ed's memory, at least to those of us who drew upon Ed's knowledge from time to time. Marylu Antonelli, Jack Forbes, Anne Hayward, Bruce Douglas and myself all drew upon his knowledge when writing about aspects of Medalta. His knowledge of the products was particularly useful to me as when I did not know the date for when a particular item was made, I could call upon Ed for help. He certainly knew the products designed in his time, and many that were made many years before he joined Medalta, and when asked for

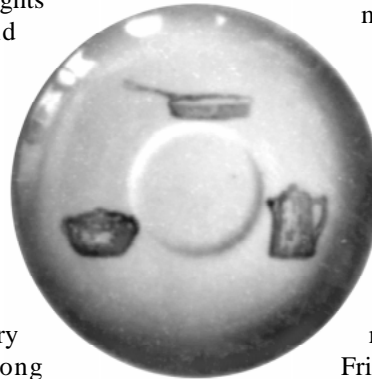


information, he was not afraid to say I do not know or I do not remember making anything like that.

Ed was also a major supporter of the Friends of Medalta Society over the years. He regularly took part in the open houses and other special events that were held from year to year. In addition to this support, he was a major contributor to the exhibits, either loaning or donating many one of a kind pieces such as the Hulme Series dishes, the buffalo head bookends, a comfort dish, a beer stein commemorating the 1939 Royal Visit and a vase bearing the crest of his unit The South Alberta Regiment. Thanks to Ed the Friends of Medalta Society have a copy of both the 1924 Medalta catalogue and the 1947 Hotel China catalogue, not to mention a good variety of books on ceramics.

I think one of the best testaments to Ed's ongoing interest in seeing the Medalta story preserved for future generations to enjoy was the family's request that memorial gifts be made to the Friends of Medalta Society. Within days several hundred dollars had been received, and I am sure that others have come in since then. Along with these expressions of

respect for Ed, I can only add my own. I will truly miss my visits with Ed, and my only regret is that I was not able to spend as much time with Ed as I wanted to. •



The Medalta Review

Editor: Ronald M. Getty

216 Maddock Way N.E., Calgary, Alta
T2A 3X3 Canada Phone: 403-273-1132
gettyr@nucleus.com

Photographer: Jim Simpson

Design & Layout: Tony Hansen

Published & Distributed by:

The Friends of Medalta Society
Box 204, 703 Wood Street SE
Medicine Hat, AB T1A 7E9
Phone or FAX (403) 529-1070
David Jamieson, Chairman

The Medalta Review is published quarterly in the interest of keeping collectors of Alberta made pottery informed on newly found products, current prices, history of the potteries and other aspects relating to the Alberta pottery industry. Each issue includes a Hycroft and Medalta section. Other columns will bring you reports regarding Alberta Potteries (Wyatt and Yuill), Athabasca Potteries, Medicine Hat Potteries (Little Chief), Medalta (1966) Ltd., Provincial Industrial Enterprises (PIE) or Sunburst Ceramics, and our question and answer column will reply to inquiries from our readers and museum visitors.

Subscription is \$20.00 per year. Back issues are available from the Friends of Medalta at \$5.00 each plus postage and handling.

Copyrighted by the Friends of Medalta Society. Reproduction of any part of this document is unlawful without written permission.

Hycroft's 14 inch Platter

The Hycroft product most favoured as a gift to mark a special occasion such as an anniversary or civic service award was the round platter. Hycroft's large platters came in two sizes either 12 or 14 inches in diameter. Both were referred to as the coupe shape, a round shallow platter with the edges curving upwards to a plain rim. The 12 inch platter is similar in design to the rest of Hycroft's coupe style plates in that the bottom is plain, whereas the 14" platter has an extra ring of clay around the centre of the plate's bottom, presumably for reinforcement and to help keep the plate from warping in the firing process. It is only the 14" size that we will look at in detail in this article. Perhaps in a later issue, we can examine the use of the 12" platter as it was in fact far more commonly used than the larger one probably due to its cheaper cost.

As a presentation piece, the platters were often sprayed with a coloured wash on the rim, banded with gold or platinum around the rim and decorated with a large central decal. The favoured pattern appears to have been the map of Alberta; but, depending on the occasion, particularly anniversaries, floral patterns may have been used. The map of Canada was likely used also as it does appear in the illustrated brochure printed by Hycroft in 1967, although I have yet to see a piece with special naming on it. Some of the service clubs

such as the Kiwanis and Lions Clubs, The Saint Johns Ambulance and the Caledonian Society used their own logo on the platters, and others like the South Alberta Light Horse, their regimental crest. The ranch decorations were also used from time to time as I have recorded the use of the Hereford bull within a lariat loop decoration.

The special naming was almost always done by hand and applied using 22K gold oxide. Usually the script would be divided between the top and the bottom of the front side of the plate. The name to whom the

piece was presented, for what occasion and on what date was usually writing around or across the top while the name of the person, club or agency awarding the item was written around the bottom.

Two of the examples I have illustrated here are hard to read as the glare from the camera's flashbulb has obliterated most of the words. One of these was given as a personal Christmas gift as it reads "CHARLIE" in hand lettered gold at the top with "Merry Christmas and a Happy New Year!" below in printed brown script. At the bottom

it simply states "from Emma and Joe 1961" also hand-lettered in gold script. I have not yet run across this platter in the Hycroft invoices, so its cost is still unknown.

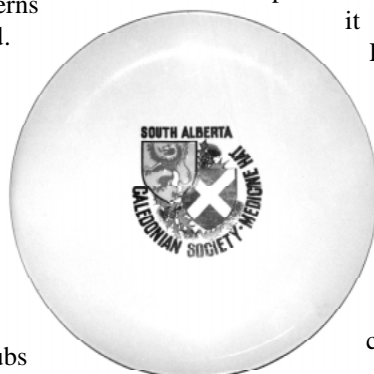
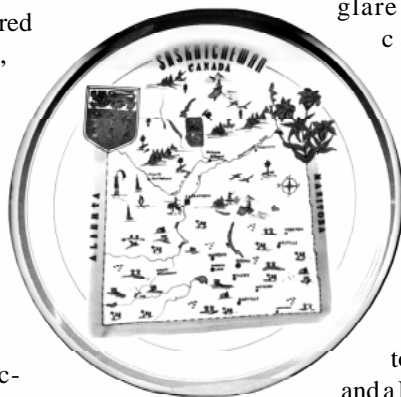
The second one also with the map of Alberta decoration in the center has "20th Canadian National Appaloosa Show - 1977/Medicine Hat" arced at the top and "Breeders Herd" at the bottom. All the lettering is in gold and the white platter has a reddish-brown rim wash and thick/thin gold banding around the rim and another two gold stripes within. The Hycroft invoice indicates that 50 of these platters were billed to Mrs. Opal Lucas of Claresholm, Alberta, at \$30.00 each on June 1977 under invoice number 8096.

While almost all of these plates are individualized and therefore perhaps not too interesting to most collectors, they are worthy of having at least a few of them in one's collection. Because of their size, the decals used on these pieces really stands out and can be clearly viewed even from a fair distance. At present, though, they are fairly hard to find and I believe the main

reason for this is that they still have a prominent place in their owner's home.

Due to their cost which was high when compared to other Hycroft products, they were seldom asked for when more than one piece with the same lettering on it was required. The 10.5" plate, and occasionally the 12" platter, was the preferred choice when multiple examples were required.

Hycroft's 14" platter was identical in size and form to the one produced by the Medicine Hat Potteries. Therefore, it was available from 1955 right through to the mid 1980's although the Hycroft sales records



show that few of them were sold prior to 1960. From 1960 to about 1972, the platters slowly increased in cost from \$7.50 each to \$15.00. A few cost more than that likely due to the extent of gold naming or the placing of a special decal on the piece. After 1972, prices began to escalate at a fairly rapid rate, with production costs, particularly wages, adjusting to keep pace with the double digit inflation that Canadians were faced with at the time.

I have given a selection of platters as invoiced over the years below, and it shows costs climbing to as high as \$75.00 for a single platter in 1983. It is hard to believe that any were sold at that price, and indeed the sales records show that few were being sold in the 1980's. What I find even more interesting is the fact that few of these platters sell for that price today as collector pieces. The few 14" platters which I have seen for sale have generally been in the \$25.00 to \$40.00 range, a bargain when you know what they originally sold for.

Please take time to read through the listing given below as I am sure that you will find some well known names there. Also it will give you a pretty good idea as to the types of special occasions for which the platters were ordered.

A Selection of Platters Over the Years

- 2, 14" platters, crest of The South Alberta Light Horse, at \$7.50 each 12 Feb. 1963 (6034) billed to Officer's Mess, S.A.L.H. Regiment, Medicine Hat; "Major General J.M. Rockingham C.B./C.B.E./E.S.O./E.D." and "Brigadier G.C. Leech O.B.E.C.D."
- 1, 14" platter, decorated & personalized, with "MCGUCKIN" billed to The South Alberta Caledonian Society, Medicine Hat, at \$22.00 on 29 Jan. 1965 (4636)
- 1, 14" platter, decorated and personalized, billed to the Union Milk Co., Medicine Hat, at \$7.50 on 25 June 1965 (6112); "MR. J.J. TIFFIN/LETHBRIDGE MILK FOUNDATION"
- 1, 14" platter, Alberta map, blue shading, billed to the Union Milk Co., Medicine Hat, at \$10.00 on 11 June 1966 (9266); "PRESENTED TO MISS GAYLENE MILLER/ALBERTA'S DAIRY PRINCESS/WELCOME TO MEDICINE HAT/June 11th. 1966./Compliments of/The Medicine Hat Milk Producers/Association."
- 1, 14" personalized platter, brown shading, gold trim, billed to the Pentecostal Evangelistic Centre, Medicine Hat, at \$10.00 on 11 Oct. 1966 (182); "PRESENTED TO STAN JOHNSON/IN APPRECIATION/FOR/18 years of service on/The Church Board of The/Pentecostal Evangelistic Centre/Medicine Hat, Alberta."
- 1, 14" Saskatchewan map platter, brown shaded, gold trim, billed to the T. Eaton Co. Canada Ltd., North Battleford, Saskatchewan at \$15.00 on 18 Aug. 1967 (2649); "CONGRATULATIONS TED ON YOUR/25th. ANNIVERSARY"+30 signatures as per sheets submitted
- 1, 14" Alberta map platter, billed to the Medicine Hat Senior Chamber of Commerce, Medicine Hat, at \$7.50 on 21 March 1968 (4094); "PRESENTED TO THE HON. ROBT. L. STANFIELD/ Farmer-Rancher Night Dinner/March 22nd. 1968./ Compliments of/The Medicine Hat Chamber of Commerce."
- 1, 14" personalized platter, Alberta map, billed to the Medicine Hat Chamber of Commerce, Medicine Hat, at \$12.00 on 10 Oct. 1969 (7591); "PREMIER HARRY STROM"
- 1, 14" platter, Alberta map, yellow shading, billed to the Medicine Hat Senior Chamber of Commerce, Medicine Hat, at \$12.00 on 19 June 1970 (9040); "PRESENTED TO HONORABLE EDGAR J. BENSON/Minister of Finance/Guest Speaker/Farmer-Rancher Night, June 15/70" and "Compliments of/MEDICINE HAT CHAMBER OF COMMERCE"
- 1, 14" platter, Alberta map, brown shading, billed to the Medicine Hat Senior Chamber of Commerce,

Hyatt CHINA LIMITED
P.O. Box 519
MEDICINE HAT, ALBERTA
T1A 7G6

INVOICE NO. 929
YOUR ORDER NO. 1. 10108
OUR ORDER

SOLD TO: LIONS CLUB OF MEDICINE HAT,
P.O. Box 732
MEDICINE HAT, ALBERTA,
T1A 7G6

SHIP TO: Same
Taken by T. Botter
Nov. 9/83.

SHIP VIA	DATE REQUIRED	P.O.	TERMS	DATE OF OUR ORDER	DATE OF INVOICE	
TAKEN	DATE	NO.	NET 30	OCT. 1983.	Nov. 9, 1983.	
QUANTITY ORDERED	LINE NO.	DESCRIPTION	QUANTITY SHIPPED	UNIT PRICE	AMOUNT	TOTAL
1 Only 14"		PLATTER im.rinted with: Alberta and Montana maps inscribed: Dave Robertson District Governor 37-C 1983-1984	1	65.00	65.00	
1 Only 14"		PLATTER im.rinted with: Alberta and Montana maps inscribed: Charles Adelman International Director Presented by Lions Club of District 37-C District Convention Nov. 19/83. 9% Federal sales tax included \$11.56	1	75.00	75.00	\$140.00

ALL ORDERS ARE EXCEPTLY PACKED. GOODS SHIPPED IN TRUCKS TO BE CARRIED FROM TRANSPORTATION COMPANY. CLAIM FOR SHORTAGE OF GOODS TO BE MADE WITHIN 7 DAYS OF RECEIPT OF GOODS.

ACCOUNTING COPY

Hyatt CHINA LIMITED
P.O. Box 519
MEDICINE HAT, ALBERTA
T1A 7G6

INVOICE NO. 9402
YOUR ORDER NO.
OUR ORDER No. 2916

SOLD TO: ALBERTA HAT IN AQUATIC CLUB,
Mr. Ken Hall,
301 - 11th St. N.W.,
MEDICINE HAT, ALBERTA.

SHIP TO: Taken Nov. 23/79.
by Rob Smith.

SHIP VIA	DATE REQUIRED	P.O.	TERMS	DATE OF OUR ORDER	DATE OF INVOICE	
TAKEN	DATE	NO.	NET 30	Nov. 1979.	Nov. 23/79.	
QUANTITY ORDERED	LINE NO.	DESCRIPTION	QUANTITY SHIPPED	UNIT PRICE	AMOUNT	TOTAL
1 Only 14"		PLATTER inscribed: Medicine Hat Kiwanis Invitational Swim Meet December 1 & 2, 1979. 9% Federal sales tax included \$3.56	1	48.00	48.00	\$48.00

ALL ORDERS ARE EXCEPTLY PACKED. GOODS SHIPPED IN TRUCKS TO BE CARRIED FROM TRANSPORTATION COMPANY. CLAIM FOR SHORTAGE OF GOODS TO BE MADE WITHIN 7 DAYS OF RECEIPT OF GOODS.

ACCOUNTING COPY

Hyatt CHINA LIMITED
P.O. Box 519
MEDICINE HAT, ALBERTA

INVOICE NO. 8793
YOUR ORDER NO.
OUR ORDER No. 267

SOLD TO: MR. HENRY KRAHE,
Box 72
WALSH, ALBERTA.

SHIP TO: will pick up when ready

SHIP VIA	DATE REQUIRED	P.O.	TERMS	DATE OF OUR ORDER	DATE OF INVOICE	
TAKEN	DATE	NO.	NET 30	APR 29/70.	MAY 11/70.	
QUANTITY ORDERED	LINE NO.	DESCRIPTION	QUANTITY SHIPPED	UNIT PRICE	AMOUNT	TOTAL
1 Only 12"		BLUE SHADED WITH GOLD TRIM and lettering PRESENTED TO: ALLAN, IONA and BRUCE HUME Church Gruburn United Church 1970. From: The Otto Shreter, George Hillers, Franklin Jans, Henry Krahe, Ben Kuslers, Eugene Kuslers. 12% Federal sales tax included \$4.35	1	40.00	40.00	\$40.00

ALL ORDERS ARE EXCEPTLY PACKED. GOODS SHIPPED IN TRUCKS TO BE CARRIED FROM TRANSPORTATION COMPANY. CLAIM FOR SHORTAGE OF GOODS TO BE MADE WITHIN 7 DAYS OF RECEIPT OF GOODS.

ACCOUNTING COPY

Medicine Hat, at \$12.00 on 31 March 1971 (482); "Presented to the Honorable Otto E. Lang/Minister of Manpower and Immigration/Guest Speaker/10th. Annual Farmer-Rancher Night/Friday March 19th. 1971./Compliments of/ Medicine Hat Chamber of Commerce"

- 1, 14" platter, Alberta map and dinosaur, white w/gold trim, billed to Brooks and District Chamber of Commerce, Brooks, Alberta, at \$18.00 on 28 Sept. 1972 (3206); "PRESENTED WITH APPRECIATION/TO THE/HON. Dr. Hugh M. Horner,/Deputy Premier and Minister of Agriculture/The Brooks and District Chamber of/Commerce/Brooks Products Expo Dinner/Sept. 29th. 1972."
- 1, 14" Alberta map platter billed to City of Medicine Hat at \$25.00 on 8 Oct. 1974 (6074); "Hon. Peter Lougheed/Cabinet Tour/October 7-8 1974"
- 1, 14" platter, Alberta map, billed to the Medicine Hat Chamber of Commerce, Medicine Hat, at \$25.00 on 19 Oct. 1976 (7653); "PRESENTED TO:/MAYOR RODSYKES/GUEST SPEAKER-76th. Annual Meeting/MEDICINE HAT CHAMBER OF COMMERCE/October 19th. 1976."
- 50, 14" Alberta map platters, billed to Mrs. Opal Lucas, Claresholm, at \$30.00 each 30 June 1977 (8096); "20th. Canadian National/Appaloosa Show/1977."
- 1 platter (size not given) billed to City of Medicine Hat at \$31.25 on 25 Jan. 1978 (8408); "Vice President and Mrs. Walter Mondale/of United States of America/ on the occasion of their visit/to the Province of Alberta/January 18th. 1978."
- 1, 14" platter, Alberta & Montana map, with "Brian Stevenson/ International Director/1977-79./Presented by/Lions Club of Medicine Hat." billed to Lions Club of Medicine Hat, Medicine Hat, at \$31.25 on 10 Feb. 1978 (8431)
- 1, 14" platter decorated and personalized, billed to the Lions International, District 37C, Medicine Hat, at \$31.25 on 27 Oct. 1978 (8836); "International Director/



Ralph N. and Mrs. Gladys Helm/District 37C Oct. 28/78./Fall Conference,/ Medicine Hat, Alberta."

- 1, 14" Alberta map platter, billed to the Medicine Hat Chamber of Commerce, Medicine Hat, at \$40.00 on 8 Nov. 1978 (8851); Presented to David R. Jacox/Vice President, Pacific Western Airlines Ltd./Guest Speaker" at top and "78th. Annual Meeting/Medicine Hat Chamber of Commerce/ November 8th. 1978." at bottom
- 1, 14" platter, billed to the Alberta Marlin Aquatic Club, Medicine Hat, at \$35.00 on 27 May 1979 (9167); Medicine Hat Kinsmen/ Dry Run Invitational/Swim Meet May 26, 27, 1979."
- 1, 14" platter, billed to the Alberta Marlin Aquatic Club, Medicine Hat, at \$48.00 on 23 Nov. 1979 (9402); Medicine Hat Kinsmen/ Invitational/Swim Meet/ December 1 & 2, 1979."
- 10, 14" platters, Alberta and Montana maps, billed to the Medicine Hat Lion's Club Convention 1981, at \$75.00 each 27 May 1981 (63); "Lions Multiple District #37/Convention - 1981/ Medicine Hat, Alberta./Lion - name/ District Governor"
- 1, 14" platter, Alberta and Montana maps, billed to the Lions Club of Medicine Hat, at \$75.00 on 18 Dec. 1981 (258); Byron R. Rutt/District Governor 37-C/1981-82/Presented by/ Lions Club of Medicine Hat"
- 1, 14" platter, Alberta and Montana maps, billed to the Lions Club of Medicine Hat, at \$65.00 on 9 Nov. 1983 (929); Dave Robertson/District Governor 37-C/1983-1984"
- 1, 14" platter, Alberta and Montana maps, billed to the Lions Club of Medicine Hat, at \$75.00 on 9 Nov. 1983 (929); Charles Adelman/ International Director/ presented by/Lions Club of District 37-C/ District Convention Nov. 19/[intext]83." •

A Well Kept Secret

Malmberg Farmstead Museum



About an hour's drive southeast of Calgary, along highway 24 heading towards the town of Vulcan and onward toward the city of Lethbridge, you will pass by the town of Mossleigh, Alberta, and it is near there where you will find the Malmberg Farmstead Museum. After a struggle of several years, Kathy Malmberg finally convinced the provincial government that the home which she and her husband Wilf had lived in for almost forty years was worthy of designation as a Registered Historic Resource, and with that designation in hand, granted September 14, 1993, Wilf and Kathy built a new house a couple of hundred yards from the historic one which soon became the Malmberg Farmstead Museum.

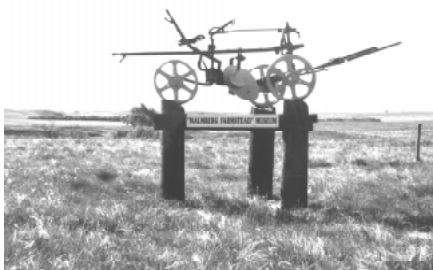
I will not go into the history of the home to any extent as Kathy, your tour guide when you visit their museum, will fill you in on the details. The original section of the house was built in 1909, but it was not until 1912 that Otto Malmberg, Wilf's grandfather, acquired it. Later it was occupied by Wilf's parents and finally by Wilf and Kathy themselves in 1957.





I am sure that one of the reasons Kathy worked so hard to get the home designated was to have a show place for her rapidly growing collection of Medalta pottery, and I must admit that it does display well in the old house. Every room in the house has at least one piece of Medalta in it, such as a chamber pot under the bed, a Gaylord shaving mug and cologne bottle in the bathroom or a lamp in the upstairs room, but the bulk of the collection is attractively displayed in the living and dinning rooms or, if it is stoneware, the porch.

I have had the pleasure of visiting the Malmbergs several times and I must admit that it is a most relaxing setting. The homes are not located near the road as you might expect, but rather back in the middle of the section. Your turn onto the twisting roadway running from the section road back to their house is marked by a restored John Deere single disc plough, horse-drawn of course, set some thirty to forty feet off to the left hand side of the road. When you arrive at the homes, you will find them situated along a coulee running back into the low hills behind the house with a small spring fed stream meandering down the coulee. Each time I have been there, I have spotted at least one deer from their living room window, and Kathy told me that sometimes they bed down right beside the house. The sounds of birds are everywhere, and if you are lucky you will



not only hear a pheasant crowing but will see one running across the yard.

On my last visit, just a few weeks ago, I saw a flock of partridge, and as I stayed quite late I had a special treat. When I stepped out of the old homestead just after sunset, it seemed that I had walked right

into the middle of a pack of coyotes. The howling seemed to be coming from all around and it was ever so close, or at least it seemed to be. There are various buildings, including a barn, and bushes all around the historic house and it sounded like a coyote was behind every one and they were singing just for me.

I will not go into any detail in trying to describe the pieces that you will find on display in their original home but I will show you a few pictures to entice you into visiting the Malmbergs. There is even plenty of variety for those who are not interested in Medalta pottery, ranging from fine furniture to bedroom and bathroom accessories, the usual early kitchen wares and appliances and a smattering of Indian artifacts such as arrowheads and hammerstones that were found on the property.

Kathy started collecting Medalta pottery around 1978 and since then she has put together a remarkable collection, be it miniatures, Ogilvie advertising pieces, vases or what have you. The 4 gallon stoneware water filter that sits in the porch is one of the harder

to find pieces of stoneware. And, the one thing that really stands out about Kathy's collection is its quality; she truly had a discerning eye and was loath to collect pieces that were not in the best of condition.

The pictures included here do not do justice to the pieces as you really need to see their colours, but take a good look at them in order to spot the many truly unique pieces that she has in her collection. In a later issue of the newsletter I will illustrate and describe a couple of the one of a kind pieces in this collection for the readers that

cannot get out to see them in the Malmberg Homestead Museum.



The museum is open from Spring until early Fall and the collections can only be viewed



upon request. To make an appointment call Kathy Malmberg at 403-684-3545 or write to her at Box 43, Mossleigh, Alberta, T0L 1P0. Please ask Kathy for the specific instructions for getting to the museum. I know that you will enjoy your visit as you will see at least half a dozen pieces that you have not seen before, and I can only hope that the coyotes will announce your departure as they did mine.

A Couple of Prizes

At present, I cannot tell you much about these Medalta teapots, other than the fact that they are both beauties and one of a kind at present. Both are the same size holding five cups, with the same impressed markings on the bottom, but each is a different style of teapot likely made within a few years of one another. The one with the floral decoration can be seen in all its colour when you visit the Malmberg Homestead Museum. The floral pattern is in fact the apple blossom design, with the white flowers, brown leaves and stems applied overglaze against a honey glazed background. It is truly unique as the flowers are almost three dimensional as they are raised a sixteenth of an inch or so above the surface. It stands about 4 3/4" high and is marked "No 36/5-CUPS" on the bottom. The Medalta stamp is the impressed M.15 mark and the production date by the decoration and shape of the

teapot (rounded top) is roughly 1935-1939. The spout was obviously chipped in the past as it has been ground down to either make it useable or more esthetically pleasing. It is one of the few damaged pieces in Kathy's collection and I must admit that I too would have picked it up in spite of its damage.

The second teapot, like the apple blossom one, is also multicoloured on a honey background. This teapot which reportedly came from Montana is now in Mel Vaselenak's collection. The image is of Lake Louise as indicated by the caption located at the lower right-hand side, although it is hard to read in my photograph. The glacier in the background is in white and purplish-blue with brown and green mountains surrounding it, and the lake in the foreground has green shrubs and trees on its shore. The style of the teapot (grooves running around both the top and the bottom) suggest a date range of 1939 to 1941, and the oxide Medalta stamp on the bottom, G.26, agrees with this date range. •



Medalta's Ogilvie Ship Style Pitchers

In the last issue I ran out of space to list the ship style pitchers that can be found bearing advertising slogans for Ogilvie flour. As you can see from the list only one example has been found representing an Alberta store; all the rest have been from

several years due to the number of different decorative designs that are found. The stencilled sailboat certainly suggests a later use to me, the other decorations are handpainted ones and the slogan "WE SELL" is unique.

the other two slogans are known only from one example of each, it is not yet possible to determine just where they fit in.

As usual, I would welcome hearing from collectors that have examples not found in this listing. I will include them in a future issue of the newsletter and just perhaps, as the sample size grows, we will be able to determine the specific sequence of the slogans used and possibly even the actual year.

W.BLAIR/BRISCO & EDGEWATER, B.C.

• 1 pint ship style pitcher with owl design, format 1-2

5 samples recorded

I.CHRISTOFFERSON/NOTCH HILL, B.C.

• 1 pint ship style pitcher with owl design, format 1-2

1 sample recorded

CITY TRANSFER CO./ COAL CRANBROOK, B.C. WOOD

• 1 pint ship style pitcher with handpainted windmill design, format 1-2

2 samples recorded



cities or towns in British Columbia. If any were made for Saskatchewan stores, they have not yet come to light.

All but one of the Ogilvie ship style pitchers are found on the 1 pint size (the J.T. Wood one being the exception), and the silhouette owls in tree design is by far the most common one. That design has been recorded eleven times, the mill six and the cottage, sailboat and Dutch windmill once each. I do not know for sure what year Ogilvie used this pitcher but it was likely 1932-1935. It could well have been used for

The slogans found on the pitchers appear within a circle and include what I have designated as formats 1-2 which starts off with "ASK FOR", 1-3 with "WE USE", 1-4 with "WE SELL" and 4-1 with "WE USE". The "ASK FOR" slogan was the one

used on the tankard style pitcher in 1928 so we can infer that if there is a time difference in the use of the different slogans that it is the earlier one. I suspect, however, that the two main slogans were in fact contemporaneous, and that the use of one or the other simply reflects the use of an Ogilvie stamp already on hand (the ASK FOR one) and one that had to be newly made up (the WE USE slogan). As



B.M. CLARK/GRINDROD, B.C.

- 1 pint ship style pitcher with owl design, format 1-2

1 sample recorded

DYNES' FEEDSTORE/ PENTICTON, B.C.

- 1 pint ship style pitcher with owl design, format 1-2

Glenbow collection

ENDERBY GROWERS ASSOCIATION/ENDERBY, B.C.

- 1 pint ship style pitcher with owl design, format 1-2

Enderby and District Museum Society and Glenbow collections

ENDERBY GROWERS ASSOCIATION/ENDERBY, B.C.

- 1 pint ship style pitcher with handpainted windmill design, format 1-2

1 sample recorded

W. HUNTER/ [FERNIE, B.C.]

- 1 pint ship style pitcher with handpainted windmill design, format 4-1

1 sample recorded

GIBB GROCERY LTD./KELOWNA, B.C.

- 1 pint ship style pitcher with windmill design (Dutch style), format 1-2

1 sample recorded

H. GIEGERICH/KASLO, B.C.

- 1 pint ship style pitcher with handpainted windmill design, format 1-2

1 sample recorded

HOMEBAKERY/PENTICTON, B.C.

- 1 pint ship style pitcher with owl design, format 1-3

1 sample recorded

HOMEBAKERY/VERNON, B.C.

- 1 pint ship style pitcher with owl design, format 1-3

4 samples recorded

Kwong Hing Lung Co./ VERNON, B.C.

- 1 pint ship style pitcher with handpainted cottage design, format 1-2

1 sample recorded

**LEDINGHAM'S BAKERY/NELSON, B.C.**

- 1 pint ship style pitcher with owl design, format 1-3
- 3 samples recorded

C.J. MARKSTAD/ELK POINT, ALTA.

- 1 pint ship style pitcher with owl design, format 1-2
- 2 samples recorded

C.G. McMYNN/MIDWAY, B.C.

- 1 pint ship style pitcher with handpainted windmill design, format 1-2

1 sample recorded

MODEL BAKERY/TRAIL, B.C.

- 1 pint ship style pitcher with owl design, format 1-3

4 sample recorded

STAR BAKERY/TRAIL, B.C.

- 1 pint ship style pitcher with owl design, format 1-3

1 sample recorded

**STAR GROCERY/ NELSON, B.C.**

- 1 pint ship style pitcher with stencilled sailboat, format 1-4
- 2 private and National Museum of Canada collections recorded

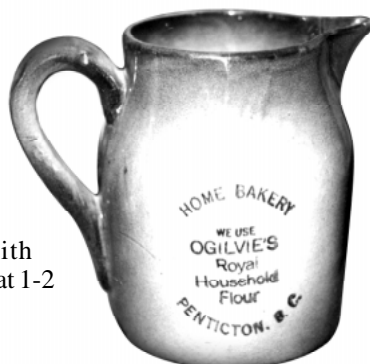
SUTHERLAND BAKERY LTD./KELOWNA, B.C.

- 1 pint ship style pitcher with owl design, format 1-3
- 2 private and Glenbow Collections recorded

J.T. WOOD/GOLDEN, B.C.

- 1 1/2 pint ship style pitcher with handpainted windmill design, format 1-2

1 private and Golden and District Museum collections recorded.



Questions & Answers

18 February 1999

Dear Paula and Michael (B.C.):

Thanks for your letter of 24 January requesting clarification on a cup impressed with a Hycroft stamp on the bottom and a saucer marked Sovereign Potters with a gold oxide stamp. The answer is actually quite simple in that Sovereign bought hundreds of thousands of pieces of pottery from Hycroft over the years. Most of these were plain white dinnerwares with no Hycroft identification stamp on them. The 320-A cup is one of several styles of cups with an impressed Hycroft stamp on it and therefore the stamp was permanently on the piece. For whatever reason, either by choice or there not being enough room for the Sovereign stamp on the bottom of a cup, Sovereign often left its stamp off the cups, but of course the in-mould Hycroft stamp would still be present.

What you have is a cup and saucer decorated by Sovereign Potters but in all likelihood both the cup and saucer were in fact made by Hycroft. I doubt that the set is a mismatched one, but I would have to see a colour photograph of the cup's pattern to let you know if Hycroft had such a design. Your description of yellow flower with brown leaves is just too general for me to know for sure.

If you could send me a picture of the cup and saucer, I would appreciate it, as I could then use your letter (giving only your initials and location) in a future issue of the Question and Answer column of the Medalta newsletter. Also, please give me your phone number just in case I have any follow-up questions.

Anyway that's the answer, and I have enclosed a partial listing of the wares that Sovereign bought from Hycroft. The 320-A cup was bought by Sovereign from 1958 to at least 1961. After 1961, Sovereign was buying fewer and fewer items from Hycroft.

Best wishes and happy collecting.

Ron Getty, Editor

Exhibitions

For our Central Alberta readers, please note that Glenbow's exhibit "**Medalta Ware: The Dream of an Alberta Pottery Industry**" will be on display from 25 July to 26 Sept. 1999 at the Red Deer and District Museum. I am certain that you will enjoy the range of products in the exhibition and

you are bound to see quite a few pieces that will not be found in your own collection. Please check with the Red Deer Museum to confirm the show dates, hours of operation, etc. before making a special trip to see it. •

Sovereign Potters' 1958 Purchases

Sovereign Potters Ltd., Hamilton (billed)

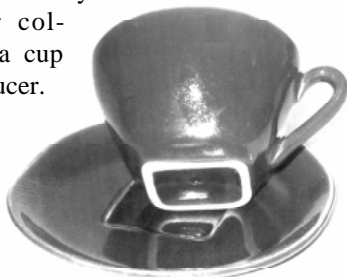
- 900 doz. of 7500 doz. 320A cups at \$1.10 doz. 29 July 1958 (1818); also same nos. 321A saucers (\$.75), 307 plates (\$1.10) & 309 plates at \$1.87 doz.
- 675 doz. of 6600 doz. 320A cups at \$1.10 doz. 5 Aug. 1958 (1858); also same nos. 321A saucers (\$.75), 307 plates (\$1.10) & 309 plates at \$1.87 doz.
- 900 doz. of 5025 doz. 320A cups at \$1.10 doz. 20 Aug. 1958 (1972); also 900 doz. of 5025 doz. 321A saucers (\$.75), 900 doz. of 5025 doz. 307 plates (\$1.10) & 900 doz. of 5025 doz. 309 plates at \$1.87 doz.
- 54 of 480 doz. 352 pitchers at \$5.40 doz. 20 Aug. 1958 (1973)
- 40 doz. 354 pitchers (\$7.60) & 50 doz. 352 pitchers at \$5.40 doz. 20 Aug. 1958 (1974)
- 900 doz. of 4125 doz. 320A cups at \$1.10 doz. 28 Aug. 1958 (2016); also 900 doz. of 4125 doz. 321A saucers (\$.75), 900 doz. of 4125 doz. 307 plates (\$1.10) & 900 doz. of 4125 doz. 309 plates at \$1.87 doz.
- 18 of 300 doz. 354 pitchers (\$7.60) & 50 of 426 doz. 352 pitchers at \$5.40 doz. 28 Aug. 1958 (2017)
- 498 doz. 320A cups at \$1.10 doz. 28 Aug. 1958 (2018)
- 900 doz. of 3225 doz. 320A cups at \$1.10 doz. 5 Sept. 1958 (2044); also 900 doz. of 3225 doz. 321A saucers (\$.75), 900 doz. of 3225 doz. 307 plates (\$1.10) & 900 doz. of 3225 doz. 309 plates at \$1.87 doz.
- 40 of 282 doz. 354 pitchers (\$7.60) & 52 of 366 doz. 352 pitchers at \$5.40 doz. 5 Sept. 1958 (2045)
- 900 doz. of 2325 doz. 320A cups at \$1.10 doz. 12 Sept. 1958 (2073); also 900 doz. of 2325 doz. 321A saucers (\$.75), 900 doz. of 2325 doz. 307 plates (\$1.10) & 900 doz. of 2325 doz. 309 plates at \$1.87 doz.
- 18 of 212 doz. 354 pitchers (\$7.60) & 46 of 284 doz. 352 pitchers at \$5.40 doz. 12 Sept. 1958 (2074)

- 480 doz. of 1425 doz. 320A cups at \$1.10 doz. 19 Sept. 1958 (2149); also 480 doz. of 1425 doz. 321A saucers (\$.75), 480 doz. of 1425 doz. 307 plates (\$1.10) & 480 doz. 309 plates at \$1.87 doz.
- 1050 of 6950 doz. 302 cereals (\$1.13 doz.) 19 Sept. 1958 (2149); same number of 301 fruits at \$.87; 16 of 194 doz. 354 pitchers (\$7.60) & 32 of 238 doz. 352 pitchers at \$5.40
- 1980 of 5900 doz. 302 cereals (\$1.13 doz.) 25 Sept. 1958 (2189); same number of 301 fruits at \$.87; 42 of 178 doz. 354 pitchers (\$7.60) & 46 of 206 doz. 352 pitchers at \$5.40
- 1950 of 3920 doz. 302 cereals (\$1.13 doz.) 3 Oct. 1958 (2230); same number of 301 fruits at \$.87; 46 of 136 doz. 354 pitchers (\$7.60) & 80 of 160 doz. 352 pitchers at \$5.40
- 425 of 945 doz. 309 plates at \$1.87 doz. 16 Oct. 1958 (2299)
- 900 doz. of 1500 doz. 320A cups at \$1.85 doz. 16 Oct. 1958 (2300); also 900 doz. of 1500 doz. 321A saucers (\$.75), 900 doz. of 1050 doz. 307 plates (\$1.10) 475 doz. 309 plates at \$1.87 doz., 22 of 56 doz. 354 pitchers (\$7.60) & 24 doz. 352 pitchers (\$5.40)
- 202 of 220 doz. no. 352 20 oz. pitchers (\$5.40 doz.) on 16 Oct. 1958 (2301)
- 600 doz. of 945 doz. 320A cups at \$1.85 doz. 7 Nov. 1958 (2543); also 600 doz. of 945 doz. 321A saucers (\$.75), 945 doz. 307 plates (\$1.10) & 360 of 520 doz. 309 plates at \$1.87 doz.
- 600 doz. 320A cups at \$1.85 doz. 7 Nov. 1958 (2544); also 34 doz. no. 354 pitchers at \$7.60 & 150 doz. no. 307 6.5" plates at \$1.10 doz.
- 80 of 202 doz. no. 352 20 oz. pitchers (\$5.40 doz.) & 36 of 140 doz. no. 354 40 oz. pitchers (\$7.60) 7 Nov. 1958 (2545)

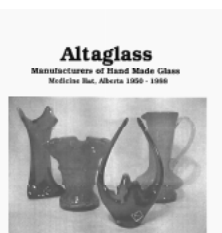
Classified Ads

Wanted: Help in writing articles for this newsletter. Do you have an interesting story about where you found a particular item, the naming found on an advertising piece or perhaps about finding a piece in a most unexpected place. Share your story with our readers by dropping me a note in the mail, phoning or sending me a copy by E-mail. Contact Ronald Getty, Newsletter Editor, 216 Maddock Way NE, Calgary, Alberta, T2A 3X3, 403-273-1132, e-mail: gettyr@nucleus.com

Follow-up: We finally found a home for our maroon cup saucer, the one with a square cup holder in the center. I only wish that I had two saucers to give away as another collector had a cup without a saucer.



For Sale: "Altaglass: A Guide for Collectors," by Mary Coward, privately printed, 1999. A 28 page coil bound booklet, 8.5" x 11" format, giving a brief history of the company, illustrating markings and showing the products (some in colour, others in black and white) both from the author's collection and as illustrated in an Altaglass catalogue. Contact Mary Coward, 13112 - 66th Avenue, Edmonton, Alberta, Canada, T6H 1Y8, phone 780-437-0474. Price is \$15.00 (includes postage and handling).



Place Your Ad Here

For those who have renewed their subscription, please remember that you get one ad per year, up to three lines long, free with your subscription. Other ads \$1.00 per line, or partial line. Pictures with your ad extra at \$1.00 each. Advertise for wanted items, items for sale, items for trade, requests for information or any other matters related to the collecting/documenting of pottery. •

The Harmer Auction

The third and final sale of Jack Harmer's collection was almost as interesting as the previous ones but as expected most were colour variations on what had been sold previously. The sale was well attended but I had the impression that there were fewer bidders than at the previous sales. It was also more of a buyers' market as many pieces went for substantially less than similar ones in the earlier sales. Lamp bases were for the most part quite a bargain as most went for \$60.00 or less.

Perhaps, I will go into more detail about this auction in the next issue of the newsletter, but for now all I want to do is illustrate the one piece that I had never seen before. I will refer to this piece as a lemonade dispenser for the lack of anything better to call it. It is identical in all respects to the normal lug handle cookie jar except for the addition of a reinforced hole on the side just above the



bottom edge. In the photograph shown here the hole is plugged with a cork, and perhaps it was used that way, but the hole is certainly big enough to hold a wooden spigot if one wanted to use it that way.

The lemonade dispenser stands 8 7/8" high and the only factory stamp on it is the impressed M.3.a mark, indicating a production date after 1930. It is finished in a solid dark green glaze, a colour commonly used by Medalta on its kitchen wares during the 1930s; therefore, its colour is also of little use in narrowing the date range. As to the Medalta records, they do not mention such a product. My guess as to its production date is 1936-1941, but admittedly it is based more on subjective criteria than fact. By the way, I thought that the selling price of \$205.00 was a bargain, even though the lid was cracked, as this is the only known example of this dispenser. •

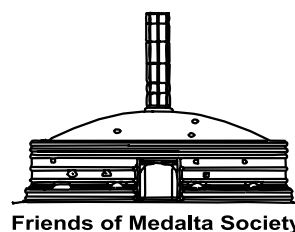
Get This Newsletter on the Net

If you are a Collector's Club newsletter subscriber and would like an electronic copy of this newsletter (in Acrobat format) please send an email to medalta@digitalfire.com for information on how to get it. •

Sunburst & Medalta Catalogs on CD

All Sunburst and Medalta Potteries Ltd. catalogs are now published in HTML format on The Medalta CD. Each displays thumbnails of all the pages, you can click any one of them for a full size reproduction. We are in the process of providing photos of each item represented in the catalogs, starting with Sunburst. We will keep you informed. •

Box 204, 703 Wood Street SE
MEDICINE HAT, Alta.
Canada T1A 7E9
Phone/FAX 403-529-1070
<http://digitalfire.com/medalta>



Friends of Medalta Society