

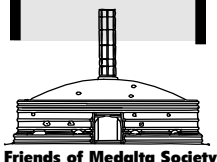
#4

Winter  
1998

# The Medalta Review

(A newsletter for Collectors of Alberta Made Pottery)

Celebrating  
Alberta's  
Ceramic  
History



## The Harmer Auction

In the last issue I mentioned that this one would have an article on Medalta's dog dishes, but due to the large number of interesting pieces in the Harmer auction sale, I have decided to do a special on that sale.

The sale was conducted by Hall's Auction Services of Calgary and was held on the night of December 7th. 1998. My guess is that over 150 people attended the sale although perhaps only about half of them were doing any bidding. In total there was 270 lots on the auction block. Most were single pieces but as usual there were a few groupings of three or four pieces and some others sold as choice. While I may not have the exact totals of the pieces for the various potteries, it is pretty close. My count shows that there was only one piece from Wyatt's Alberta Potteries, one from PIE (Provincial Industrial Enterprises), one from New Medalta Ceramics, 12 from Medalta Potteries (1966) Ltd., Redcliff; 60 Medicine Hat Potteries' pieces (Little Chief), and about 225 Medalta pieces. These figures add up to more than the 270 separate lots as I have split out the groupings for my records.

Once again I do not have the exact figure for the amount realized for the whole auction as I missed a couple of pieces, and likely wrongly recorded a few prices as well, but it was just a bit over \$28,000.00 in total. The seller I heard was extremely happy with the results, as was the auctioneer. My impression of the sale is that most of the collectors in attendance went home with a few prized pieces. Dealers attending the sale for the most part did not acquire too many pieces as there were few bargains where one could expect to resell the item for a decent mark-up.

As was expected, perhaps, the prices were generally high, especially for the rare, unusual and highly decorated pieces. This was one of the few major Medalta sales that comes up from time to time, and thanks to having lots of lead time, it was well advertised among the collectors. Most were from Alberta but included were a few from Saskatchewan, British Columbia and even one from Ontario.

I must say that it was a pleasure to be able to look up the collection along with pictures of a few choice pieces on the web page that Hall's Auction shares with an art dealer. The quality of the pictures was quite good and I can only hope that Hall's does the same type of listing, but perhaps with more pictures, for future pottery sales. This was only the first of three anticipated sales to dispose of the Harmer collection, so watch out for the other two.

I had the opportunity of viewing the collection several weeks before the sale, and as a result I was able to get pictures of and make notes on some of the pieces that I had not previously recorded. Some of these, I would like to bring to your attention as you never know when other samples will show up. The

*Continued Page 3*

## The Medalta CD

The Medalta CD is a real product now and it is available on the Internet at <http://digitalfire.com/medalta>. This CD contains copies of all newsletters up to and including this one and all three books by Ron Getty. The CD is professionally packaged and works on Macintosh or Windows to give high quality renderings of photos and text.



We plan to gradually develop the CD into a complete reference work of Medicine Hat's ceramic history. In time it will become more interactive, and we hope that eventually it will also be a part of an interactive tour of the museum facilities. Work is also beginning on the creation of a database for all pottery pieces made by the various potteries in the Medicine Hat area. If you are a collector or expert on any company and would be willing to assist in a web-based project to compile this catalog, please email [medalta@digitalfire.com](mailto:medalta@digitalfire.com).

Are you a collector and would you like to publish a paper or book for inclusion on the CD? Please email Tony Hansen at [thansen@digitalfire.com](mailto:thansen@digitalfire.com) for more information. •

## Your Email Address Needed

To establish a network of people to work together on the tremendous job of documentation that faces us, we would like to maintain email addresses in our mailing list database. This will facilitate the task of creating a virtual network of experts on which we can draw to better meet the tasks at hand. Please email Tony Hansen at [thansen@digitalfire.com](mailto:thansen@digitalfire.com) to be included. •

## Contents

The Harmer Auction .....	1
The Medalta CD .....	1
Your Email Address Needed .....	1
From the Editor .....	2
Plainsman Clays .....	2
The Harmer Auction Continues .....	5
Want Ads .....	5
Recent Prices .....	5
An Athabasca Pottery Find .....	5
Eastend, Saskatchewan: Advertiques & Souvenirs ..	6
Questions and Answers .....	8
A Few Sunburst Finds .....	9
More Named Flat Ashtrays .....	10
BeeHive Kiln Project .....	10
Get This Newsletter on the Net .....	10
Exhibitions .....	10
Renewal Time .....	10
Buy a Medalta Brick .....	10

## From the Editor

It has now been a year since we started *The Medalta Review* and I sincerely trust that you have enjoyed reading it as much as I have enjoyed doing the research to produce it. At times it has been late by a few weeks to a month, and I can only offer my apologies for my tardiness. My New Year's resolution is to try to stick to our quarterly deadlines beginning with the Spring issue of Volume No. 2 being in your mailbox by the first week of April 1999.

The format of the newsletter will largely remain the same for now. I am presuming that you are happy with the content as I have not heard otherwise, and since our subscription list continues to grow. Each issue will continue to have something about Medalta's and Hycroft's products, a question and answer column, current prices, new finds and coverage of the other

potteries in the area. The only change I am making is to drop the listing of what's in the next issue. I have found that I cannot always get the information and photographs to complete the article which I had proposed, so it's probably best to just keep you in suspense as to what will be coming up next time.

I would still like to include more input from collectors and would welcome your stories on a piece that you researched, where you found that special item or what have you. How much Alberta made pottery have you found outside of Canada? I would think that quite a few pieces were taken home by Americans, Germans or perhaps even the Japanese as souvenirs of their visit to Alberta. If you have found such a piece in your travels, it might make an interesting story. How about a story on a dead-end chase, a piece or collection that you heard about only to find that it was not what it was claimed to be.

Also please let me know about your new finds. If you pick up any pieces that you feel are rare or unusual please call me or send me a photograph. New shapes, modified items, new decorative designs and quite a few previously unrecorded advertising pieces are still showing up. Please share your find with other collectors by including it in the newsletter.

Finally, let me thank the many individuals that have already helped by providing information for the newsletters. Some have brought pieces to me for photographing and others have sent me a photograph. Many collectors have phoned me to keep me up to date on prices and others have called or sent letters for our Question and Answer column. Don Pollock's story about the swirl teapot was commented favourably upon by several readers and I am particularly thankful for his participation. Thanks to all of you for your help and I will be looking forward to your continued support in the new year. Happy collecting and best wishes to each of you in 1999.



Plainsman Clays is located on the old Alberta Clay Products property across the street from the Clay Products Interpretive Centre. Plainsman has worked closely with the Medalta project from its inception in the 1970s. It has a modern plant and employs about 10 people.

The company was started in 1968 by Luke Lindoe. He had previously worked for Medicine Hat Potteries in the 40s and for IXL Industries. It would be safe to say that no living individual knows more about prairie clay resources than Mr. Lindoe. He continues to work in his studio as a sculptor and can be seen prospecting in the hills during summer months.

Most of the employees at Plainsman are longtime clay industry workers who were personally familiar with the processes, workers, and management at some of the historic potteries that the Medalta project celebrates.

Plainsman mines clay in Idaho, Manitoba, Alberta, Saskatchewan and Montana and brings thousands of tons to the plant site in Medicine Hat. These materials are blended into about thirty different clay bodies which are shipped across Canada and the northern US. The Plainsman box is a familiar site in schools, universities, and potteries.

It contains 20 kg of soft ready-to-use clay. Bodies are made for earthenware, stoneware, and sculpture and sell for \$15 to \$25 per box. For more information visit their website at <http://digitalfire.com/plainsman>. •



## The Medalta Review

Volume 1, Number 4, Winter 1998

**Editor:** Ronald M. Getty  
216 Maddock Way N.E., Calgary, Alta  
T2A 3X3 Canada Phone: 403-273-1132

**Photographer:** Jim Simpson  
**Design & Layout:** Tony Hansen

**Published & Distributed by:**  
The Friends of Medalta Society  
Box 204, 703 Wood Street SE  
Medicine Hat, AB T1A 7E9  
Phone or FAX (403) 529-1070  
David Jamieson, Chairman

The Medalta Review is published quarterly in the interest of keeping collectors of Alberta made pottery informed on newly found products, current prices, history of the potteries and other aspects relating to the Alberta pottery industry. Each issue includes a Hycroft and Medalta section. Other columns will bring you reports regarding Alberta Potteries (Wyatt and Yuill), Athabasca Potteries, Medicine Hat Potteries (Little Chief), Medalta (1966) Ltd., Provincial Industrial Enterprises (PIE) or Sunburst Ceramics, and our question and answer column will reply to inquiries from our readers and museum visitors.

Subscription is \$20.00 per year. Back issues are available from the Friends of Medalta at \$5.00 each plus postage and handling.

Copyrighted by the Friends of Medalta Society. Reproduction of any part of this document is unlawful without written permission.

Ronald M. Getty

Cont'd from page 3 prices which I am providing include the bid price plus the GST and buyer's premium.

For the record, I am only listing the top 12 items in this sale for now. Only one of the top twelve is included among the pieces which I have illustrated as most of them did not even come close to the \$400.00 mark even though they are rare or unusual. In future issues I will likely be giving more prices realized at this sale, perhaps even the lowest ten or twenty pieces as there were a few good buys in the sale.

### The Top Twelve (all Medalta)

- corrugated mixing bowl with cows scene \$741.00
- Medalta's miniature churn, advertising Medicine Hat Pottery Co. \$684.00
- vase style no. 100, glazed \$570.00
- vase no. 102, lacquered camel decoration \$570.00
- vase, horn shaped, white \$570.00
- Toshach's mixing bowl, shoes \$541.00
- corrugated mixing bowl with cottage scene \$541.00
- corrugated mixing bowl with glazed floral design \$485.00
- jardiniere style no. 109 with lacquered sailboat decoration \$456.00
- Ogilvie's pitcher with owls advertising The Home Bakery, Penticton \$456.00
- cookie jar, glazed maple leaf design on honey \$428.00
- cookie jar, glazed sailboat design on honey \$400.00

### Some Choice Medalta Pieces

The Nanking Tavern hotelware pieces were sold separately and likely went to more than one collector. To date, I have not been able to determine where this

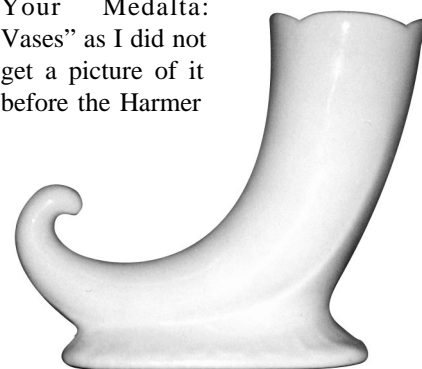
restaurant was located but I suspect that it was located in southern Alberta. The name Nanking Tavern is in what I refer to as Chinese style lettering, and it is found in association with a couple of actual Chinese letters or symbols, usually at the left and right-hand sides. The dark lettering stands out well against the yellow, white lined pieces finished with a dark brown line around the edge or the rim. Each of the four pieces sold at this auction had different factory stamps on them indicating orders covering the years 1950 to 1952. The teapot sold for \$250.00, the handled creamer \$80.00, the unhandled creamer \$57.00 and the butter pat \$80.00.

Two Bickle-Seagrave dinner plates were included in this sale. The pattern is an attractive yet unusual one for hotelware as it depicts a fire-engine scene in the centre of the plate. The fire-engine is in black on a white plate with the rim in yellow

and with a maroon line between the rim and the white centre. The Medalta back-stamp dates these plates to 1952.

The only other specimens of this pattern seen so far are dated to 1952 and all three specimens have been in collections from eastern Canada, but just where they are coming from is still not known. The 9" plate went for \$160.00 and the 8" one for \$102.00

The buffalo horn vase is the one that I mentioned but did not illustrate in the booklet "Know Your Medalta: Vases" as I did not get a picture of it before the Harmer



collection was placed in storage. I thought that it would bring the highest price of all the pieces in the sale but it did not. There were three items that beat or equalled it in price. Perhaps the reason for the price being lower than I expected was its colour as it was finished in a plain white glaze.

The Medalta mark on the bottom is the one I refer to as G.51 dating the piece from 1947 to 1950. It is only 6 1/8" high and the rectangular base measures 5 1/2" long x 2 3/4" wide. The successful bidder got this piece for \$570.00.

The 1/2 pint Elite style pitcher with the brown Jack and Jill stencil on the side of a cane coloured piece was well marked with the maple leaf stamp designated G.27, dating it from 1938 to 1941. My photo does not show the caption "JACK and JILL" as it is at the lower left-hand side of Jack. Baby

ware pieces are always hard to find and highly prized by most collectors, so it was not too surprising that



this piece sold for \$262.00.

The last piece that I will illustrate is the stoneware French pan glazed with Medalta's popular bean-pot brown. Two large ones and one smaller one were up for



grabs in this sale and considering how hard it is to find French pans with a Medalta stamp on them, I thought that the price was fair even though others thought that the prices realized were pretty high. The two larger ones measuring 10 1/4" across the top sold for \$160.00 and \$176.00 while the smaller 8" one sold for \$137.00.

### Items Made by Medicine Hat Potteries

This is only the second example of this large stoneware pitcher that I have heard of, and it is the first that I have been able to photograph and measure. Its large size and styling is perhaps suggestive of a pitcher that would form part of an ewer set, but its plainness and stoneware body suggests some other use perhaps for pouring acids or other chemicals. It measures 8 1/8" high and is well stamped on the bottom with the "Little Chief" mark, the numeral 2 (presumably for 2 quarts) and the style no. 257. It sold for \$171.00.

I have also seen a couple of other examples of this corrugated ball-shaped vase, but in a smaller size. This one stands 5" high and is glazed with a turquoise blue on the outside and with white in the interior. The Little Chief stamp was present as was a style number which was all but obliterated by the heavy glaze. My best guess is that it might be C-5 but admittedly only the 5 was clear. If a collector reading this newsletter has one of these vases with a clear style number on it, I would appreciate hearing

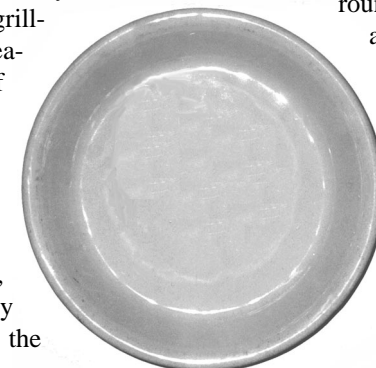
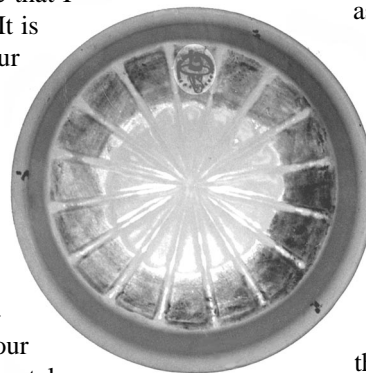


about it. In my opinion, this piece was reasonably priced for an uncommon one, selling for \$102.00.

This relatively large vase, megaphone shaped with a large handle on each side, was glazed in yellow on the exterior while the interior was finished in white. It stands 10 7/8" high and has an attractive embossed pattern on each side. The one side shows geese rising from a bulrush pond while the other side shows more bulrushes. The relief figures are actually quite pronounced although I must say that they would show up better if accented in a different colour from the yellow. It had no style number on the bottom, but as it was clearly stamped it sold for \$285.00.



This is the first example of this style of pie plate that I have recorded. It is all yellow in colour and measures 9 7/8" in diameter by 1 5/8" high. The bottom has a raised grill-work pattern presumably to permit placing the piece directly on a stove element. Perhaps one of our reader's can more accurately explain this type of grill-work and the reason for it; and, if so, I will include it in a future issue of the newsletter. I have seen a similar, if not the very same pattern, on the



bottom of a casserole made by Medicine Hat Potteries. This pie plate, stamped with the number 217 on the bottom, sold for \$57.00, not a bad price for a piece which I have never seen before. •

### The P.I.E. Vase

(Provincial Industrial Enterprises)

This vase, later given style no. 98 by Medalta when it took over much of the inventory of the P.I.E. plant in 1939, exhibits a bright floral pattern on a sandy green background. Sandy was a term used by Medalta to describe a background colour, and as the marked examples which I have recorded exhibited white mottles or spots on an appropriately coloured background, I must presume that sandy refers to the white mixed with or on the background colour.

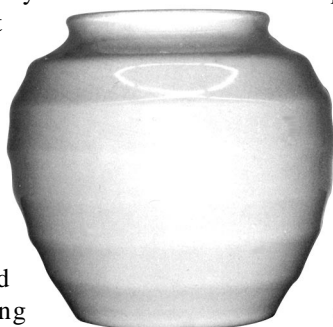
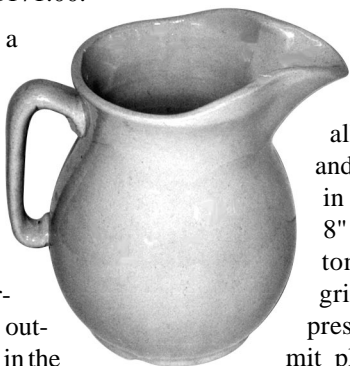
P.I.E. may not have described its colours this way, but it seems to be as good a descriptive term



as any to use. Anyway the two main flowers are brightly coloured (one in yellow and red, the other in blues, both with yellow centres) and found at the end of brownish stems with green leaves, all on the lighter sandy-green background. A gold band accents the top of the rim and the bottom bears a round PIE oxide stamp as well as the code:

*N.5 standing for style No. 5  
D.636 Decoration No. 636  
C.505 Colour No. 505*

The price realized was about \$216.00 which is high for a piece with some damage on the rim, but I understand that it was bought by a





collector who is planning on doing some research and hopefully a booklet on P.I.E.'s products.

### Wyatt's Vase

This vase made by Alberta Potteries Limited when the company was owned by Jesse William Wyatt from 1931 to 1936 was one of its popular Dutch designs. The Dutch man and woman are finished in bright coloured lacquers which show well against the cream background of this vase, while the top and bottom are finished using a coppery coloured lacquer. The vase stands 9 1/4" high and is well marked with an impressed stamp along with the number 60, its style number. It went for what I thought was a relatively high price fetching \$342.00, but it indeed was a beauty and Wyatt pieces are very hard to come by.



### The Harmer Auction Continues

The second instalment of the Jack Harmer collection is tentatively set to go on sale through Hall's Auction, Calgary, on the evening of Monday, February 22, 1999. I have no details whatsoever because the pieces are still all packed away. The last I heard, the sale would once again be exclusively be pottery items that from 250 to 300 lots will be up for grabs and that once again it will be a good mixture of the main potteries in the Medicine Hat area. As requested for the last auction, please contact Hall's Auction to let them know that you would like a detailed listing when it is available. Write to: Hall's Auction, 5240 1A Street S.E., Calgary, Alberta, T2H 1J1; phone 403-640-1244; fax 403-259-3682; e-mail hodgins@cadvision.com or check the web-site from time to time (www.hodginsauction.com). Hopefully pictures of the collection will once again be posted on their web-site. Also please keep in mind that a listing and pictures, if included, will not be available until about 2 weeks before the sale. •

### Want Ads

**Wanted:** Medalta planters in the animal shapes (rabbit, deer, elephant, donkey, etc.) in good condition and stamped. Contact Annette Diemert, Box 366, Foremost, Alberta, T0K 0X0

**Wanted:** The right home for Medalta saucers. We still have not had a request for the two Confetti shape saucers (roundish with the four sides slightly flattened and with a square cup ring in the centre), advertised in the last two issues of the newsletter., a deep maroon (ox-blood) in colour and a bright lime green on cream background one with the Confetti stamp (G.70) on it. Anyone with a matching square-based cup but missing the saucer can have the matching saucer for the cost of shipping it to you. Please contact the Friends of Medalta at 403-529-1070.

### Place Your Ad Here

One ad per year, up to three lines long, free with your subscription. Other ads \$1.00 per line, or partial line. Pictures with your ad extra at \$1.00 each. Advertise for wanted items, items for sale, items for trade, requests for information or any other matters related to the collecting/documenting of pottery. •

### Recent Prices

(Harmer auction excluded)

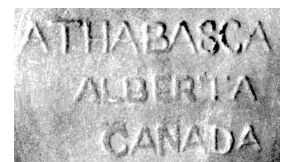
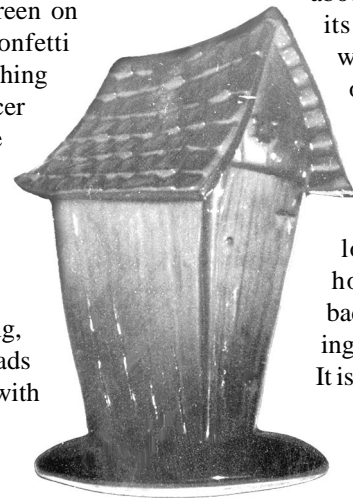
- Medalta steam table insert, 8" h x 8.75 dia top \$60.00
- Medalta, Redvers, Sask. tankard pitcher, damaged \$160.00
- Medalta pig or bed warmer \$115.00
- Medalta early water keg, raised bands \$295.00
- Medalta basket-weave pitcher, Vickers \$120.00
- Medalta Hexagon vase, size and decoration unknown \$240.00
- Medicine Hat Potteries Hatina 10.5" plate \$20.00
- Medalta 8.5" plate, cobalt blue \$35.00
- Medalta 10" plate, MBA Boys Club crest \$20.00
- Medalta Toshach bowl, badly cracked \$150.00
- Medalta Toshach square pitcher, chipped corner \$325.00
- Medicine Hat Potteries vase style no. C-114 \$37.50
- Medicine Hat Potteries polar ice water jar \$285.00
- Medicine Hat Potteries elephant, blue \$140.00
- Medalta style 101 vase, handmade sailboat design \$225.00
- Medalta lamps, no. 16 and no. 35 \$100.00 each
- Medalta Canadian National rose bowl \$265.00
- PIE vase, Medalta style no. 95, lacquered, fish decoration, greenish-blue \$60.00
- Medalta celery tray, Frankie's, oil derrick, hair-line crack \$45.00
- Medalta bon-bon dish, orange \$18.00
- Medalta 2 pt. pitcher, cows \$25.00 US, California
- Medalta ashtray, Gurd's \$3.00 US, California •

### An Athabasca Pottery Find

### A Wall Plaque

The Glenbow Museum has what I consider an unusual wall plaque included in its pottery collections as it is in the shape of an outhouse. Perhaps it is not a biffy but to me it looks more like that than anything else even though it does not have the classic moon cut into the door. It stands 10 inches high, is about 7.25" at its maximum width and is only about an inch in thickness. It is hollow with a hole in the back for hanging it on a wall. It is made using the red burning clay that Athabasca used, and it is

finished in one of the plant's common glaze colours. The main part of the building is red (a clear glaze over the red clay) while the base and shingled roof are accented with black. The other unusual feature of this piece is the



Athabasca stamping on the back. It is the first example that I have seen of an embossed or raised stamp. The majority of Athabasca stampings that I have seen have been impressed ones (4 different ones so far), but at least one paper label has also shown up. •

## Eastend, Saskatchewan: Advertiques & Souvenirs

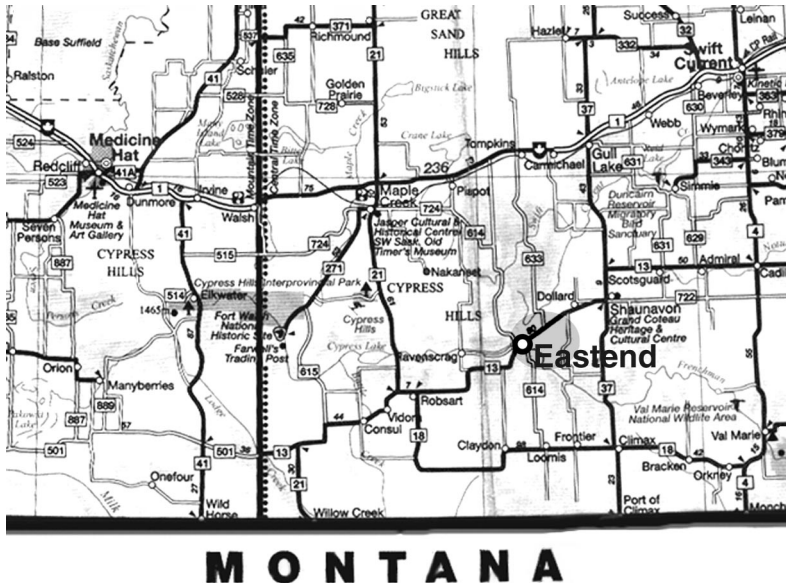
There are a few key pieces that most Medalta collectors try to pick up for their collection: an Ogilvie advertising piece, a fuzzy owl piece (pitcher, vase or lamp base) and the classic Toshach mixing bowl with the shoe decoration and slogan "U O 2 B IN TOSHACH'S SHOES". I personally think that a piece from Eastend, Saskatchewan, should be added to that list as that small Saskatchewan town was so important in the Medalta's history. It was the main source of the stoneware clays used by Medalta from 1916 right through to 1954.

Eastend, also listed as East End in the early days, is situated about 100 miles south-east of Maple Creek in the Frenchman River valley at the point where the river leaves the Cypress Hills.

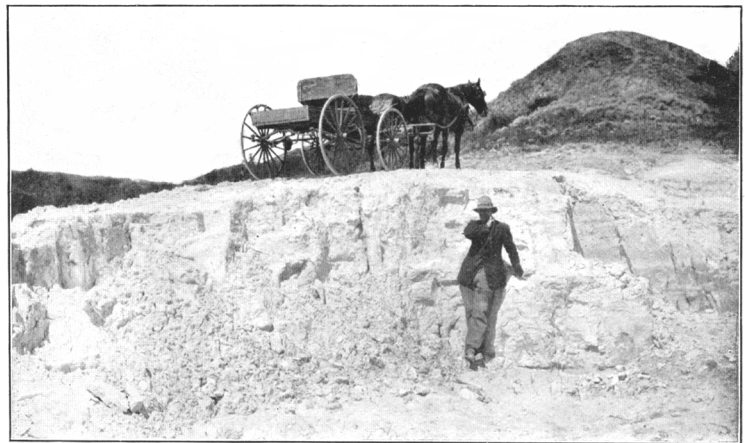
The town is reportedly named after the nearby East End Metis settlement dating to the 1860s and 1870s. Also at that time, the river was called the Whitemud, so named for the white clay cliffs found along it, and apparently there is a movement afoot today to change the name of the Frenchman River back to the Whitemud.

For many years I had presumed that Eastend was somewhere near the Saskatchewan/Manitoba border, and so I was somewhat surprised to find its true location at the east end of the Cypress Hills. The event that actually brought its location to me was not the clay beds as you might think, but rather the finding of an almost intact *Tyrannosaurus Rex* skeleton nicknamed "Scotty" in 1994. (Appropriately named after the bottle of Scotch opened to mark the rare

find). Nor have I been to the area to see where the clays were mined, but perhaps I will make the trip in the near future as I believe Scotty is on display there as well.



From 1915 to 1917 Canada's Department of Mines located and sampled the clay beds found throughout southern Saskatchewan and later conducted tests on the properties of each clay. Published in 1918, their study titled "Report on the Clay Resources of Southern Saskatchewan" showed that many of the clay beds in and around Eastend were well suited for the production of stoneware products.

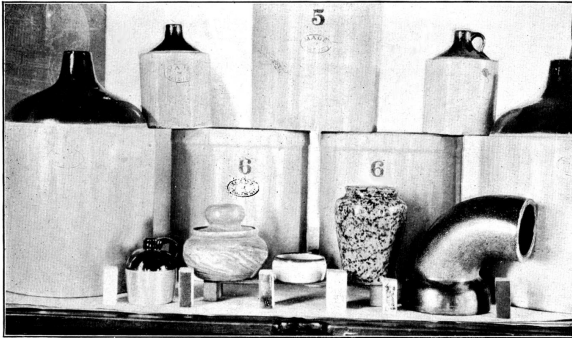


Whitemud stoneware clays, being worked on sec. 36, tp. 6, range 22, w. or 3rd mer., near Eastend, Sask.



At one point N.B. Davis, the author of the article, commented "Considerable quantities of clay from Willows and Eastend are being shipped to Medicine Hat for the manufacture of sewerpipe, wall coping, flue lining, and stoneware pottery". The clays were definitely being shipped to the Alberta Clay Products Co. Ltd., but if any were going to Medalta at this time, he does not say so. Page 40a of the article is reproduced

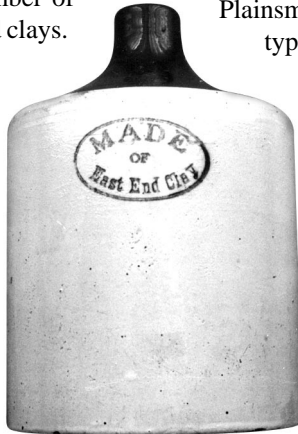




Stoneware pottery and sewer pipe, made from Eastend clays illustrated on plate VI.

herein as it shows a number of products made of Eastend clays.

In fact the crocks and jugs are proudly stamped on the side in an oval stamp "MADE OF East End Clay" and I suspect that they were made at the Alberta Clay Products plant as they did some of the test firings for Mr. Davis. In form the large five gallon jugs are similar to Medalta's, but the one gallon size is somewhat different.



Tony Schlachter found a real prize one day when he had the good fortune of picking up one of the Eastend one gallon jugs. It stands 9 3/8" high and has the usual dark brown top and plain stoneware grey body. The oval stamp, about 3 inches in width, is applied in a blue glaze.

From this start, Eastend went on to have a long association with Medalta. From about 1910 Dick Dempster and later Alphonse (Al) Vogt (beginning in 1920) worked the clay pits right through to 1958 when both men retired due to the dwindling demand for stoneware clays and the finding of better clay beds at Elkwater. The pits worked by Al Vogt were located north-west of town, and once the overburden was stripped from the beds, the clays were dynamited, loaded in horse drawn wagons and taken to a siding in Eastend where the clay was loaded into the waiting railcars for shipment to Medicine Hat. The mining of clay was a significant operation in its

heyday, although at times it was not very lucrative considering the hard work involved. For example Al Vogt's 1926 contract with Medalta required him to provide 15 to 16 tons of clay per day for which he received only \$1.05 per ton.

Today IXL Industries and Plainsman clays extract thousands of tons of whitemuds each year. More than 10,000 Plainsman customers make pottery of all types, many using bodies very similar to those employed by Medalta. IXL uses whitemuds to make very white brick.

In all likelihood the town of Eastend today is similar to what it was some 75 years ago. In 1922 the population was given as 500 in Rigley's Saskatchewan Directory. In 1980, the census report gave it as 771 and by 1996 it was down to 616. Grain farming is still the mainstay of the area

unless of course "Scotty" has changed it to tourism.

## Medalta's Eastend Pieces

In addition to the wine jug advertising Eastend clay, a number of stores in the area ordered items from Medalta. Some ordered general souvenirs while others requested pieces which displayed their name on the side. While I do not know the date of most of these pieces from either the sales records or Medalta's correspondence, we can generally date them by style and form.

The earliest piece from Eastend may

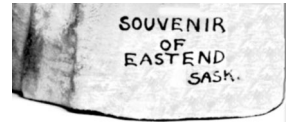
be the polar bear figurine (owned by Tony Schlachter) which has "SOUVE-



NIR/OF/EASTEND/SASK." written on its base. It has the oval G.5.b stamp on the bottom, stands about 9.25" high and is around 9" long. The polar bear was available from 1930 to at least 1936 and this Eastend bear likely falls within that range. One Medalta letter, dated 21 December 1935, dealt with the cancellation of an order for teapots and with some buffalo figurines on backorder. Do the words in this letter "still to go" infer that other items had already been sent to him? Perhaps, and just maybe he was the one ordering the polar bears, either at this time or earlier as Ed Youngberg's name does appear in the artsale records from 1934.

This polar bear was acquired many years ago and therefore its purchase price is irrelevant, but at today's prices I would venture a guess that it would sell in the range of \$500.00 to \$600.00. Other polar bears with no advertising or souvenir wording on them have sold for around \$400.00 so we at least have some idea what the current price of this one might be.

Another general souvenir of Eastend, dating between 1932 and 1935, is the ship style pitcher owned by Mel Vaselenak. While it has the same wording in black as found on the polar bear, it is laid out differently and placed within a rectan-



December 21st, 1935

Mr. Ed. Youngberg,  
EASTEND, Saskatchewan.

Dear Sir:

This will acknowledge receipt of your instructions to cancel the 12 only 24's Ship Teapots stamped, on back order.

Regarding the 6 buffaloes still to go. Would advise you that it will be at least two weeks before we can make delivery.

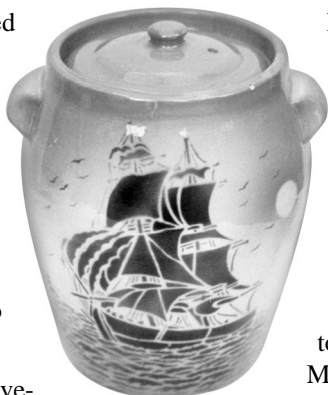
Yours very truly,

MEDALTA POTTERIES LIMITED.

EAS/EM

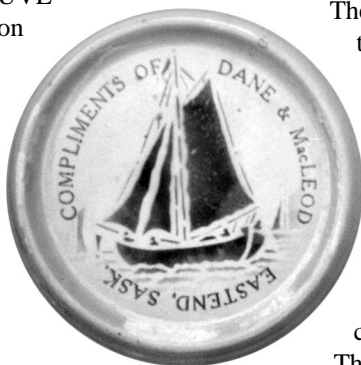
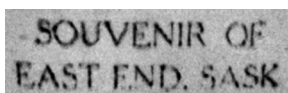
per

gle with notched corners.. The pitcher is the 1.5 pint size, is decorated with the hand-painted windmill scene and is marked with the usual M.22 impressed Medalta stamp. Once again the purchase price of this piece is historic, but a current price would likely be \$350.00 to \$500.00.



The last general souvenir which I have recorded was recently acquired by Alvin and Sondra Bebault for \$515.00 and it is indeed a beauty.

It is the honey glazed cookie jar with the galleon decoration on one side and "SOUVENIR OF EAST END, SASK." on the other side just below the centre. The advertising is actually fairly inconspicuous as the lower line EAST END, SASK. only measures 5.0 cm. long. Its date is also unknown but my guess is 1935 to 1940 due to the galleon decoration which was introduced in late 1934.



So far only two Eastend advertising pieces have shown up. The earliest of these was the one named to the Klein Brothers. It is on the plain tankard style pitcher, the 1 pint size as indicated by the numeral 1 impressed in the bottom, and the layout of the advertising is reminiscent of Ogilvie's advertising pitchers which have been positively dated to 1928. The date of this piece however remains open, but we can block it as between 1926 and 1932 as that is when this style of pitcher was being made.

This date is basically supported by the information given in the local history booklet. The Klein



brothers, Jakie and Tony, settled in Eastend in 1914, opening a butcher shop in June 1914.

Jakie sold his share in the store to Stanley Provan when he enlisted for service during WWI in 1917, and at that time the name was changed to Klein and Provan. A few years later, Tony also sold his share and it was not until that September 1920 that the two brothers once again bought back the meat store that they had founded and operated it together until December 1934. When Jakie became the sole owner in 1934, he too changed the name, this time to Pioneer Meat Market.

When I first heard of the Klein Brothers pitcher, I believe around 1990, the dealer was asking \$100.00 for it, and he likely got his price as similar Ogilvie pitchers were selling in that range. Today the price might be a bit higher, but perhaps not as it was not in perfect condition.

The last Eastend advertique that I am aware of is the teapot stand or trivet named to DANE & MacLEOD, a grocery and dry goods store. The lettering and stencilled sailboat decoration is in brown against the ever popular honey coloured background.

This particular trivet is the earlier thicker style, measuring just over 6" in diameter.

So far I have recorded six specimens of this trivet in collections while all the other Eastend pieces are represented by single finds. All have borne the G.30.a stamp on the bottom which has a date range in agreement with the order that was billed to Dane & MacLeod in November 1935. At that time, the store was charged \$1.50 for a rubber stamp and \$38.40 for the product. It is my belief that the product received was indeed the teapot stand, but admittedly the Medalta records do not specify the piece.

A few months ago a sample of this trivet sold for \$225.00, perhaps a bit high in the minds of some collectors, but when you stop to think that ones without a store's name are selling in the \$150.00 range perhaps it was a good buy at that. •

## Questions and

**E-Mail:** to Friends of Medalta

Just wanted to drop a quick line to say that we just got back from Medicine Hat and enjoyed a most wonderful tour of the museum... It was excellent and we are recommending it to everyone we talk to. Thank you very much for an informative and entertaining couple of hours.



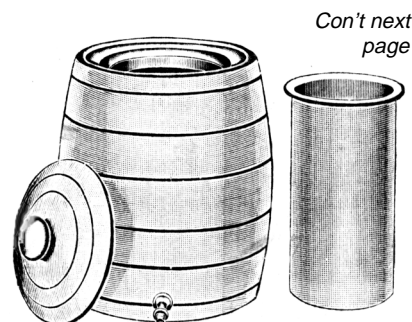
One question I have regards Medalta's water coolers. I had never seen one until this past Saturday at a garage sale. It was a dark brown 5 gallon size and was complete with a steel water tap. What information do you have on this product, years of manufacture, etc.

J.B. and C.F.

Dear J.B and C.F.

The story of Medalta's water cooler's is actually quite a long one, so I will only be giving you the basic as I have not yet examined this product in detail. Firstly, I should mention that Medalta had two similar products, the water jar and the water keg. The keg indeed looked like a keg with either raised simulated barrel bands (early style) or blue bands (later style). It can be readily distinguished from the water jar in that it does not have handles and by its ice chamber insert.

What you have described is the ice water jar and it likely says so on the

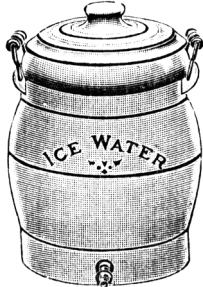


Con't next page



## Answers

side just above the bottom. The brown one which you saw, and hopefully picked up at a bargain price, was likely introduced around 1930 as that is when Medalta introduced some other reddish-brown stoneware pieces.



The ice water jar was available from at least 1922 right through to 1954. The early versions, with ICE WATER in large letters on the side and arced over a geometrical design, were stoneware grey in colour with either black or blue coloured bands. The jars are holed on the side just an inch or two above the bottom to take a spigot. The early versions can be found with a larger hole to take a wooden spigot but the nickel plated spigot is by far the most commonly seen one. The later versions were marked with the G.11 stamp and can be found in both grey stoneware and reddish-brown colours, and all examples seen so far have been holed to take the metal spigot. Sizes included 3, 5 and 8 gallon ones, although I have only seen the reddish-brown jars in the two smaller sizes. The 8 gallon size is seldom seen in collections. The water jar lids are marked with an impressed "W" on the top of the knob.

Ice Water jars were also specifically named for the company ordering them, and those ones were usually not marked ICE WATER. Most, if not all of these jars were ordered by companies providing supplies to school houses. Christie, Moyer, Osborne and Western School Supply are the names that I have run across so far.

Prices vary considerably depending on the markings, size and style of jar. The ones holed for a wooden spigot are usually more as they are indeed hard to find. The reddish brown 3 and 5 gallon jars usually fall in the \$175 to \$250.00 range. The ones bearing the name of a school furnisher company fall in the \$325.00 to \$450.00 range.

For now that is about all I can tell you about Ice Water jars. Hopefully this information is helpful to you.

## A Few Sunburst Finds

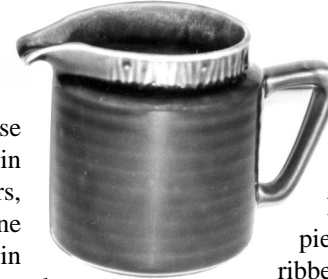
A recent donation to the Friends of Medalta Society of some 35 pieces of pottery made by Sunburst Ceramics Limited of Lethbridge allowed me to photograph a few pieces that I had not previously seen. I cannot say much about any of these pieces as the company was in business for just a few years, from 1960 to 1965 in Medicine Hat and from 1966 to 1975 in Lethbridge. The pieces illustrated here were all likely made in the Lethbridge plant, but as I have presently seen so few documents relating to Sunburst's products, the dating of the company's pieces remains problematical.

Two of the pieces are part of the dinnerware set designed by Neils Gravsén that I have been referring to as the slash and dot pattern. I gave the set this designation due to the pieces having a raised dot and angular line pattern around the rim, top or what have you. The pattern is almost always glazed a dark brown, but I have been told by someone that they had seen a plain white plate. Sometimes there is a slight greenish tinge on the brown particularly around the rim.

The first new piece is a teapot/coffee pot that stands about 9" high, while the second one is the cream pitcher measuring about 3 3/4" high.

Added to the other pieces in the dot and slash pattern, we are getting quite a set: cup and saucer, 6.5" side plate, 8" and 10.5" dinner plates, 5" fruit bowl, 6.5" soup bowl, 9.25"

salad/vegetable bowl, sugar bowl, butter tray and two sizes of rectangular shaped serving trays.

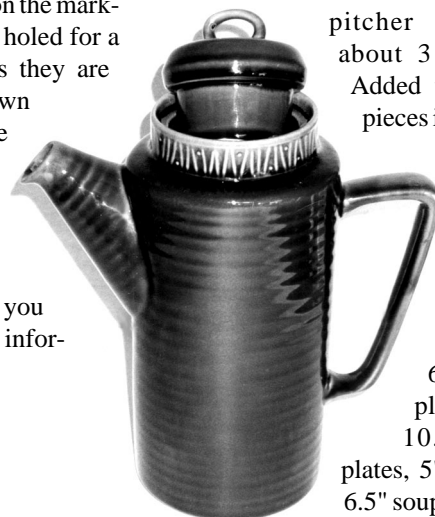


The second cream pitcher illustrated here has a vertical ribbed pattern running around the centre. I have seen a few other pieces with a similar ribbed pattern around the rim or on the side, but not yet enough variety to say that it was available as a full dinnerware set. So far the items seen include an 11" diameter plate and a teapot. Perhaps we

will find that the whole selection is only a tea service set and not a full dinnerware set like the slash and dot pattern



The last piece I had actually seen once before, but one much smaller in size and marked TEA rather than FLOUR. We now have two pieces in the canister set and if two, why not four, perhaps ones for coffee and sugar. The tea canister is only 7 3/4" high while the flour stands 11 3/8" high. The pieces were glazed in a dark brown for the tea holder and a yellowish-brown for the flour canister. The lids in both cases were glazed in different, lighter colours than the main body. The markings on the bottoms indicate that Neils Gravsén was the designer of this set. •



## More Named Flat Ashtrays

### FOLLOW-UP

- **"MELTON | HOTEL | ROCKY MOUNTAIN HOUSE [smaller]"** open lettering around rim with stencilled sailboat in centre
- **"GREENHILL | HOTEL | \*BLAIRMORE \***" dark brown open lettering on cream, no central image
- **"HOTEL ROYAL | CALGARY | ALBERTA"** in brown open-style lettering around the rim and in the centre **"We Welcome You/ at the/HOTEL ROYAL"** in mixed style lettering, all on cane, stamp no. G.26.b
- **"HOTEL ROYAL | CALGARY | ALBERTA"** in brown open-style lettering around the rim and in the centre **"We Welcome You/ at the/HOTEL ROYAL"** in mixed style lettering, all on cream, stamp no. G.33
- **"ROYAL | HOTEL | MEDICINE HAT"** in brown open-style lettering with a rubber stamped windmill in the centre. •

## BeeHive Kiln Project

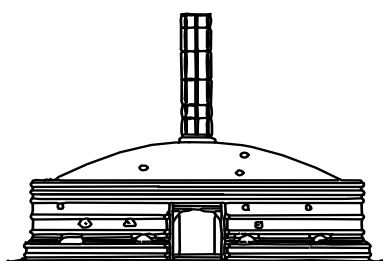
Four beehive kilns remain standing at the Medalta Potteries site. They were constructed in the early '20s at a cost of \$8,400 each. The ravages of repeated gas firing, age, and weather has taken its toll. Funding has been received from Alberta Historical Resources Foundation to restore one of the kilns in 1999. This will serve to strengthen the dome and halt deterioration. The other kilns will be upgraded in time and perhaps one made operational. •



## Get This Newsletter on the Net

If you are a Collector's Club newsletter subscriber and would like an electronic copy of this newsletter (in Acrobat format) please send an email to [medalta@digitalfire.com](mailto:medalta@digitalfire.com) for information on how to get it. •

Box 204, 703 Wood Street  
MEDICINE HAT, Alta.  
Canada T1A 7E9  
Phone/FAX 403-529-1070  
<http://digitalfire.com/medalta>



**Friends of Medalta Society**

## Exhibitions

**Medalta:** For our readers in the Regina area, please note that Glenbow's exhibit "Medalta Ware: The Dream of an Alberta Pottery Industry" will go on display 23 May 1999 at the Dunlop Art Gallery in Regina. If you did not see it when on display at Glenbow, you should try to take it in. I have heard from half a dozen people who saw it in Medicine Hat and they were very pleased with both the interpretation and with the wonderful selection of pieces.

Check with the institutions listed below to confirm the show dates, hours of operation, etc.

**Dunlop Gallery, Regina**  
23 May - 3 July 1999

**Red Deer & District Museum**  
25 July - 26 Sept. 1999

**Sunburst:** The Sir Alexander Galt Museum is presently preparing an exhibition showing the wares that Sunburst Ceramics Limited produced over the years. The exhibition dates are 10 January to 1 March 1999 but please check with museum staff for hours of operation and a possible change in the opening date. Phone 403-320-3898, FAX 403-380-4958 or send a letter to: The Sir Alexander Galt Museum, The City of Lethbridge, 910 4th. Avenue South, Lethbridge, Alberta, T1J 0P6

## Renewal Time

It's that time of year again. We now have the first four issues behind us and are well on our way to researching the 1999 Spring issue. The cost of four issues remains at \$20.00 so please take a moment to renew your subscription for the 1999 season by mailing your cheque to The Friends of Medalta Society. An addressed envelope is included for your convenience.

## Buy a Medalta Brick

It might also be a good time to think about sending the Friends of Medalta Society a cash contribution to help prepare new displays and for the preservation/restoration of the two pottery



sites under their care. You will receive a charitable donation receipt for your gift, and for any amount over thirty dollars you can have your name, or any name of your choice, imprinted on a brick which will be added to wall of supporters. The wording can be one or two lines long with up to 21 letters (including spaces) on each line. Whether or not you want a brick with your name on it is up to you, but any and all donations in support of the Friends' programs will be most welcome.



In case you were wondering, the wall of support now numbers 825 bricks, quite a testament to the interest in preserving the original Medalta buildings.