

Medalta's Measuring Cup

Medalta made a measuring cup as one of the eight or more items made for Ogilvie Flour Mills over the years and, in all probability, the cup was made in 1929. The Medalta papers clearly show that the 1927 and 1928 selections were the 7-inch special mixing bowl and the plain undecorated 1-pint tankard pitcher respectively, but the later records are not so clear.



The records for 1929 are largely missing but the measuring cup is recorded in the 1930 year-end inventory records, listed only in the "Goods on Hand" section, not the "Goods in Progress" area. And even though I cannot absolutely rule out 1930, I feel that 1929 was the year the measuring cup was selected as the giveaway piece. I will not go into more detail for the reasons behind this belief as, when it comes down to it, does the exact year really make that much difference.

The measuring cup appears to have been made exclusively for the Ogilvie venture as I have never heard of nor seen a cup with other general advertising on it. All have borne Ogilvie advertising slogans. Over the past twenty years, I have in fact seen only one cup with no advertising on it. It was likely one of the left over year-end pieces, or perhaps one taken home by a Medalta employee. It has for ten years or more been sitting on the high shelf above the sales counter in the Triple E Store in Medicine Hat, and it may well still be there, if anybody wants it, as I saw it as recently as six months ago.

The earthenware measuring cup was made using Medalta's yellow burning clay and, after the Merchant's name and Ogilvie's slogan was added in black oxide, the whole was sealed with a clear glaze which brought out the yellow colour of the clay. The cup stands about 3 3/8 inches high and measures about the same in its diameter across the top. I seldom took the time to record the measurements of this item, but there are height and diameter variations of 1/8 inch or a bit more.

The interior is marked in black giving four gradations which are from the top to the bottom (the first one about an inch below the rim): 1 cup - 8 oz., 3/4 cup - 6 oz., 1/2 cup - 4 oz. and 1/4 cup - 2 oz. The markings are often crooked, likely a reflection of the difficulty in stamping the piece on the interior. And I would be very surprised if the measurements were anywhere near accurate.

The cup appears to have been jiggered rather than slip-cast with the strap style handle being applied using a slurry. The pouring spout was apparently pressed out from the rim while the clay was still in the plastic state.

The measuring cup is one of the few pieces made by Medalta that can be said to be either left or right-handed. Most handled vessels have the spout opposite the handle and for that reason can be used equally as well by either left or right-

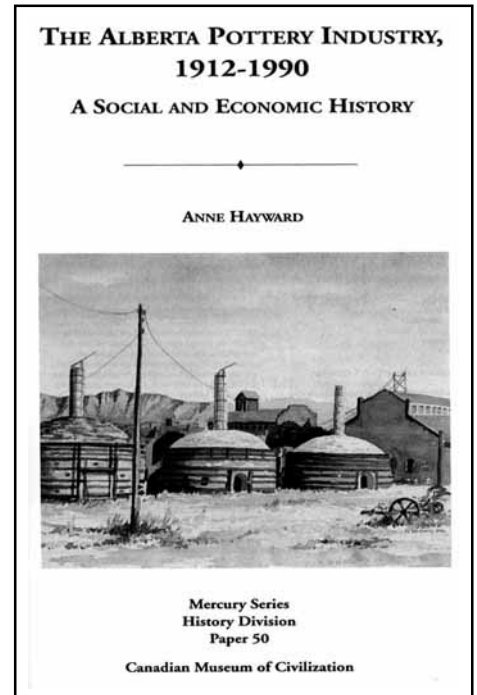
Continued page 2

A New Book on the Alberta Pottery Industry

The Canadian Museum of Civilization commissioned Anne Hayward to write this Mercury Series book to coincide with the opening of the Medalta Pottery Exhibition that is now on display in Ottawa/Hull. Presently, I am only part way through the book, and for that reason I will not comment on it other than to say, if you want a book that shows Medalta's products then this is not for you. While it mentions products throughout, it seldom actually shows any pieces.

What I have shown here are the title page, the back cover which gives a summary of the contents and a bit about the author, and the order information as provided in the book. When I phoned to get the price, I was advised that it costs \$29.95, plus GST and handling on top of that.

Continued page 4



Contents

Medalta's Measuring Cup	1
A New Book on the Alberta Pottery Industry	1
Checklist of Medalta's Measuring Cups	3
Some Hycroft Acronyms Deciphered	4
Selected Hycroft Dinnerware Patterns	5
ANEW COOKIE JAR DECORATION	7
Three More Hycroft Hat Ashtrays, High Style	8
A Named Medicine Hat Potteries Cup and Saucer	8
Medalta's Double-Spouted Creamer	9
Questions & Answers	10
Want Ads	10
The Best of the C.O.P. Sale	10

handed individuals. It is only because the measuring cup has the spout oriented 90 degrees to the handle that this distinction can be made by collectors.

At present I have no statistics about the frequency of each type as I never made such a distinction when I recorded collections. My photographs show that almost all the ones that I took pictures of are left-handed as the handle is



on that side of the spout. I have seldom used a measuring cup, but if I were to use one of the Ogilvie cups, being right-handed, I would hold it in that hand and pour either to my left or towards me. Pouring this way seems to go with the most natural rotation of one's wrist, along with being able to see what you are pouring and where it is going.



But as I said, I do not do any baking and I seldom, if ever, have the need to measure the number of ounces needed. When I do read a recipe and it says half a cup, I simply grab a cup from the cupboard, any cup, and fill it half full. If an ounce one way or the other makes any real difference I have never noticed it! But since the majority of Medalta's measuring cups have the handle to the left of the spout when the cup is facing you, perhaps measuring cups are, in fact, intended to be used in the left hand. At least that way a right-handed person could stir while pouring.

Did Medalta intentionally make left and right-handed cups? I doubt it. I suspect that the right-handed ones were made accidentally rather than at the request of the merchant.

The central advertising slogan, usually in a circular format, typically has the merchant's and/or store's name at the top while the location - usually both the town and province - is arced below the slogan. Less common is the horseshoe-like format where there is no text around the bottom of the Ogilvie slogan. The merchant's and/or store's name and location have in all cases seen so far been in capital lettering.

Two different flour slogans have been found on the measuring cup. The common one, all but one store, is the one saying "ASK FOR..." (assigned code 1-2 in the checklist). The other slogan "WE USE..." (code 1-3) appears on the cup named to Suther-



land's Bakery, Kelowna, B.C.

The only other variation in the stamping is the presence or absence of two side by side asterisk-like symbols above the Ask For. The presence of such a symbol indicates that that particular merchant had previously ordered the 1927 and 1928 advertising premiums. The rubber stamps were not replaced yearly unless they had to be due to damage or wear, and it is the asterisk variety that is found on the 1927 mixing bowls. Of the thirty recorded merchant names, only four have shown the asterisk variation and all were B.C. stores.



The Ogilvie slogan is most often located below the pouring spout, but examples can be found where the advertising is on the side. For the most part, the stamping on the measuring cups is fairly legible but as the naming was applied to a curved surface, you often find a few incomplete and/or smudged letters. (Please note that the smudged lettering on some of the cups shown here is due to enlarging a very small picture, not poor markings on the piece itself.)

Following this discussion is a listing of all the measuring cups that I have recorded, and so far some 30 different merchant's names have been found. In looking over the listing you will see that 25 of them represent businesses located in British Columbia, four were from Alberta and only one from Saskatchewan. In spite of the fact that Alberta and Saskatchewan ones are so much harder to find, it makes little difference in the price being asked for them by dealers.

Generally, the cups fall in the \$150.00 to \$250.00 range when in good condition and a few have even sold for more than that, particularly a piece from a British Columbia ghost town. The condition does not make as much difference in price as it does on other pieces such as vases and mixing

The Medalta Review

Editor: Ronald M. Getty
216 Maddock Way N.E., Calgary,
Alta T2A 3X3 Canada
Phone: 403-273-1132
gettyr@nucleus.com

Photographer: Jim Simpson
Design & Layout: Tony Hansen

Published & Distributed by:
The Friends of Medalta Society
703 Wood Street SE
Medicine Hat, AB T1A 8S9
Phone or FAX (403) 529-1070
Dianne Finch, Chairman
info@medalta.org

The Medalta Review is published quarterly in the interest of keeping collectors of Alberta made pottery informed on newly found products, current prices, history of the potteries and other aspects relating to the Alberta pottery industry. Each issue includes a Hycroft and Medalta section. Other columns will bring you reports regarding Alberta Potteries (Wyatt and Yuill), Athabasca Potteries, Medicine Hat Potteries (Little Chief), Medalta (1966) Ltd., Provincial Industrial Enterprises (PIE) or Sunburst Ceramics, and our question and answer column will reply to inquiries from our readers and museum visitors. Subscription is \$20.00 per year. Back issues are available from the Friends of Medalta at \$5.00 each plus postage and handling.

Copyrighted by the Friends of Medalta Society. Reproduction of any part of this document is unlawful without written permission.

bowls. Cracks, chips and stains usually lower most Medalta pieces by 50% or more, but with advertising pieces it is usually not more than 25% unless the damage is quite significant. Rarity is partly responsible for this as many of the measuring cups are known by only a single sample. Of the ones listed herein, less than ten have been recorded in three or more collections and, at present, five is the most that I have recorded for any one merchant. The other main factor is that it is very difficult to find a perfect measuring cup. The nature of the piece resulted in chipping of the spout and rim when being washed and, oftentimes, they are discoloured by what was measured in them.

Checklist of Medalta's Measuring Cups

In this listing, the first two lines indicate the store/merchant markings found on the measuring cup. Where I have added the location or other information not on the piece itself, it is placed in square brackets. The last line gives the slogan code and the quantity that I have recorded in my notes. Thus, 1x indicates that only a single specimen has been recorded so far.

As usual, if you have a piece not recorded here, I would welcome hearing about it and receiving a photograph of it to share with our readers in a future newsletter.

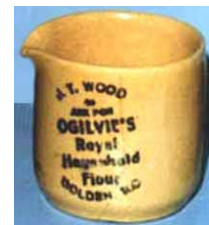
- AGNEW & COMPANY
ROSSLAND, B.C.
code 1-2 no **: 4x
- APPLEDALE GENERAL STORE
J.M. KULL [APPLEDALE, B.C.]
code 1-2 no **: 1x
- ARMSTRONG CO-OP. SOCIETY
ARMSTRONG, B.C.
code 1-2 no **: 1x
- W. BLAIR
BRISCO, B.C.
code 1-2 no **: 1x
- W.B. COOMBES
FORT ASSINIBOINE, ALTA.
code 1-2 no **: 1x
- CRESTON VALLEY CO-OP.
ERICKSON & CRESTON [B.C.]
code 1-2 no **: 1x
- DESBISAYS' DEPT. STORE LTD.
MISSION CITY [B.C.]
code 1-2 no **: 4x
- DYNE'S FEED STORE
PENTICTON, B.C.
code 1-2 no **: 3x
- ENDERBY GROWERS ASSN.
ENDERBY, B.C.
code 1-2 no **: 5x
- M.J. FINLAYSON & CO.
SICAMOUS, B.C.
code 1-2 no **: 1x



- FORD'S GROCERY
MARA, B.C.
code 1-2 no **: 1x
- HARROP & DISTRICT
CO-OPERATIVE ASS'N.
[HARROP, B.C.]
code 1-2 with **: 2x
- HAYHURST & BRYCE
VERNON, B.C.
code 1-2 no **: 2x
- C.B. HUME & CO. LIMITED
REVELSTOKE, B.C.
code 1-2 with **: 1x
- W.A. HUNTER
LONE BUTTE, B.C.
code 1-2 no **: 1x
- A. KILBY
HARRISON MILLS, B.C.
code 1-2 no **: 1x
[Not yet seen so the wording could be different.]
- J.R. LUKER
GOLDEN PRAIRIE [SASK.]
code 1-2 no **: 1x
- MARSHALL'S KASH STORE
SILVERTON, B.C.
code 1-2 no **: 2x
- NELSON & ARCHIBALD
GRANDE PRAIRIE, ALTA.
code 1-2 no **: 1x
- PRINCETON DEPT. STORES
PRINCETON & COPPER MT. [B.C.]
code 1-2 no **: 2x
- QUALITY GROCERY CO. LTD.
CRANBROOK, B.C.
code 1-2 no **: 2x
- THE RIBSTONE TRADING CO.
RIBSTONE, ALTA.
code 1-2 no **: 1x
- THE S.A.F.E. LTD. [SALMON ARM
FARMER EXCHANGE]
SALMON ARM, B.C.
code 1-2 no **: 1x
- SHIELDS & CO. LIMITED
LUMBY, B.C.
code 1-2 with **: 1x



- SIMPSON & GOWANS LTD.
SUMMERLAND, B.C.
code 1-2 no **: 1x
- SLATOR & PERKINS
HIGHRIDGE, ALTA.
code 1-2 no **: 2x
- SUTHERLAND'S BAKERY
KELOWNA, B.C.
code 1-3, 4x
- THE COMPANY STORE
TRAIL, B.C.
code 1-2 no **: 5x
- THEAL & BOYDLTD.
CHILLIWACK [B.C.]
code 1-2 no **: 5x
- J.T. WOOD
GOLDEN, B.C.
code 1-2 with **: 4x
-



Some Hycroft Acronyms Deciphered

A Low Stetson Hat

The Hycroft invoice records provided the full name for what D.V.A.E.N.E. stood for. In the broadest sense, this piece might be classified as a military collectible now that we know it was commissioned to mark a meeting of the Department of Veteran's Affairs Employees' National Association. I did not try to confirm that their annual meeting was held in Calgary that year as I believe that the ashtray speaks for itself in that regard.



The invoice (no. 4977) for 150 white hats was sent to the Department of Veteran's Affairs Employees' National Association, Calgary, Alberta, on March 11, 1965, charging them \$170.00 for the lot or about \$1.15 for each ashtray.

The hat itself is white with a gold hatband and the usual gold trim is found around the brim. The Calgary, Canada, at the back is in gold while the D.V.A.E.N.E./1965 is in dark brown.

A 9-Inch Commemorative Plate

Thanks to the footwork of Audrey Malek and the staff of the Medicine Hat Museum and Art Gallery we have been able to answer a collector's inquiry as to what L.O.B.A. stands for. Their search of the internet for a web page with LOBA in it lead to the Ladies Orange Benevolent Association of Alberta. This organization, the ladies section of the Orange Lodge, among other causes distributes revenues generated from an endowment fund to a variety of children's programs.



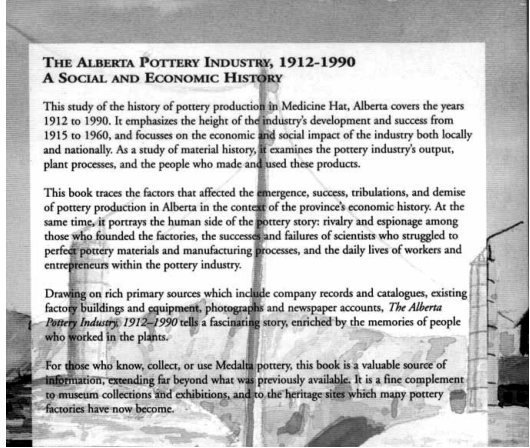
While I did not find out much about when LOBA was organized, the person who I talked to advised me that the Red Deer branch has been around since just after the turn of the century. I asked her and another member of the Lodge if they recalled ever seeing these plates or the vases that were given out in 1965, but they did not.



The Hycroft invoices record several sales entries to the Ladies' Orange Benevolent Association. The first pair of orders dating to 1957 included the plate illustrated herein. The initial order (invoice no. 5669) was for 100, 9" plates, game birds in flight decoration, with gold L.O.B.A. inscription, billed to L.O.B.A. c/o Mrs. R. Hall, Medicine Hat at \$5.50 dozen on February 12, 1957. Then a few months later another order was filled, this time for 78, 9 or 10" Regency Rose plates, Holiday style, with a gold stamped L.O.B.A. inscription at \$5.50 dozen on April 30, 1957 (6797) which was billed to L.O.B.A. Medicine Hat.

I have not yet seen an example of the later 1965 orders which recorded "L.O.B.A./ Provincial Grand Lodge/ of Alberta/ Lethbridge/ 1965" in gold on 77 vases, white with the Spray Rose decoration, at \$1.25 each on March 11, 1965 (4976) billed to L.O.B.A. Grand Lodge Committee, Lethbridge, and then another 26 identical vases at the same price on May 17, 1965 (5563). •

Continued from page 1
 May I add that I would welcome a review of this book for a future newsletter, if any of our readers will take the time to write one. •



Titles in the Mercury Series can be obtained by calling 1-800-555-5621; by e-mail to <publications@civiliation.ca>; by Internet to <http://www.cyberboutique.civiliation.ca>; or by writing to:
 Mail Order Services
 Canadian Museum of Civilization
 100 Laurier Street
 P.O. Box 3100, Station B
 Hull, Quebec J8X 4H2

Selected Hycroft Dinnerware Patterns

It has been a while since we looked at Hycroft's decorative dinnerware patterns, although we did reexamine the Breeze pattern and the two Jill patterns in the last issue. (See issues 7, 8 and 10 for other Hycroft patterns. We will now illustrate another half dozen or so patterns for which we know the names and have illustrations.

Thanks to the little pattern book that Malcolm McArthur kept, we at least know the pattern name, pattern number, decal and style of dishes for all but one or two of the patterns numbered from 501 to 565. Until we actually see a piece, we cannot be 100% sure of the placement of the decal (in the center, at the side, etc.) or how the piece was treated further, be it with speckling, stippling or banding.

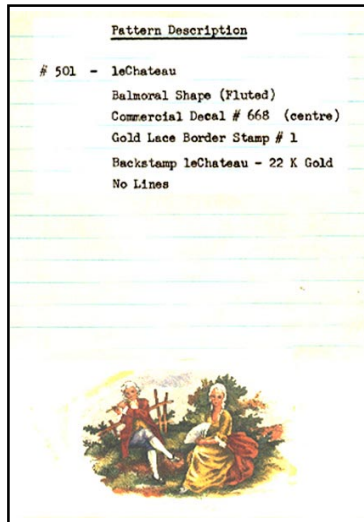
Basically what the factory did as they came out with a new pattern was to list it in this little loose-leaf binder giving the pattern name, number, style of dishes used, the decal number and often the finishing trim. At the bottom of the page they glued a sample of the actual decal that was used. The Le Chateau pattern shown here is typical.

Le Chateau is one of the few patterns in this booklet that I have not actually seen in the marketplace. I could well have walked by a plate with this design on it, as it is so different from the usual floral

or geometric patterns used by Hycroft. The colourful image shows what I presume to be a French aristocratic couple in a garden setting. Both seated, the man wearing a red coat and blue pants is playing a flute, while the woman wearing a yellow dress with a large red bustle is fanning herself as she listens to the music.

Should one of our readers have this pattern in their collection, I would appreciate receiving a photograph of it.

And as a quick reminder to our subscribers, particularly new ones that do not have all copies of the newsletter, please be advised that Hycroft produced its dishes on three different shapes: the Balmoral shape with its fluted or swirl design rim or exterior, the round coupe or Holiday shape, and the oval or orbit shape. (For the full discussion of these forms see newsletter number 7.)



Trees: No Pattern Number

The Trees Pattern is produced on the round coupe style dishes and there is no evidence that it was ever assigned a pattern number. The design is comprised of three highly stylized coniferous trees at the left-hand side of the plates and likely other dishes as well. The background colour has been seen in pink, greyish-green and plain white. In one instance, a pink plate with brown trees, there was a wash around the rim matching the colour of the

trees.

Trees was made for four years from 1963 to 1966, and by August 1966, Hycroft invoices were being marked "Pattern no longer available." in reply to requests for this pattern. The 1964 Macleod's Spring and Summer Catalogue lists the 20-piece

luncheon set at \$6.35, and there it was advertised as a "Gracefully expressive tree design on a Soft Green background sim-

ple, yet has a modern charm." The accompanying illustration shows that the cup was also decorated with stylized trees and that the cup was the high style or style no. 322.

None of the Hycroft back-stamps that I have recorded gave the pattern name, although they did say hand decorated.

From a collector's viewpoint the pattern seems to be fairly hard to find, and so far I have only recorded side and dinner plates.

Cubes: Pattern No. 2100

The Cubes Pattern was available from 1959-1971, a relatively long period of time which may indicate that it was fairly popular. Produced on the round coupe style dishes the pattern consists of two separate clusters of cubes off to the side, the outside edge of the clusters connected by an encircling stripe about an inch inside the rim. Each cluster is a different colour (one blue and the other yellow) and each is comprised of three cubes (two large and one tiny one).

And you can also find both blue and black stripes and even ones with no stripe at all, the plain unstriped variety being seen the least often in the marketplace.

The 1964 Macleod's catalogue lists 20-piece sets at \$6.25, sets that were acquired from Hycroft for about \$3.25 each. In addition the catalogue also advises that "cups



Continued next page



and cereal bowls are a solid blue" which explains why I have never seen the cube pattern on those items. In fact, so far I have only recorded the pattern on side and dinner plates.

By the way, when the catalogue says solid blue, it may well mean pieces with blue exteriors and white interiors (a.k.a. blue/white lined). The illustration of the Cubes pattern in the 1967 Hycroft Price List shows both blue/white lined and yellow/white lined 320-A style cups sitting in front of the dinner plate.

Cubes pieces are usually marked with a Hycroft backstamp that gives the pattern name above the hand decorated marking.

Wistful: Pattern No. 536

Four or five years ago, I picked up a couple of dinner plates bearing the Wistful pattern decal for the Friends of Medalta Society, but unfortunately they did not include the pattern name as part of the backstamp. Now thanks to Malcolm McArthur's pattern book we know both the name and number.

Wistful was produced on the round coupe style dishes with the decal being centered on white dishes with a platinum stripe just inside the rim. It only appears for one year, 1956, in the Hycroft sales records. It is quite different from what you expect to see in a Hycroft pattern as the floral and leaf pattern is all in shades of gray. Offhand, I do not recall any other Hycroft floral pattern that was not multicolored. Just what the leaves and flowers may be will be left up to you to determine, but they appear to include daisy-like flowers, bluebells, dill and what may be a fern leaf.



Interestingly, about September 9, 2001, two 6¼" diameter cereal bowls with this decal centered in the bottom of the bowl sold on ebay for about \$34.00 Canadian, and one of the bowls had a small chip from the rim. The Hycroft stamp found on the bowls is the one shown here that I have designated G.1.

Daizy: No Pattern Number

The Daizy pattern is listed in the Hycroft records from 1964-1970, and on the invoices it is usually listed as Daisy not Daizy as on the Hycroft backstamp. Even though it was sold for some seven years, it apparently was not that popular a pattern judging by the number of times you find it listed in the Hycroft invoices; and, furthermore, you do not find it in the marketplace very often.



Just recently I saw the first ebay auction of this pattern and that piece, a 6½" side plate sold for about \$7.75



Canadian. As is so often the case with smaller pieces, the vendor did not know the pattern name as it was not included as part of the backstamp.

Daizy is found on the round coupe style of dishes and is listed as one of Hycroft's hand decorated patterns. Placed on plain white plates, the pattern consists of a pair of 4-petal yellow flowers, each with brownish centers partly extending into the petals, and each with a branching black stem. The flowers were likely put on the plate using a lead-

foil stencil, while the black stems were drawn on by hand.

I do not presently know what style of cups went with this pattern as I have yet to see a marked one. However, the cup likely has the daisy pattern on it as I have recorded saucers deco-

rated with the daisy flower, albeit only a single flower rather than a pair.

An April 1969 Hycroft price list gives the cost of 20-piece sets at \$4.35 and 32 piece sets at \$7.55.

Idlewylde: Pattern No. 545



Thanks to a B.C. collector I have a picture of this pattern to share with you. It is found on the plain white coupe style dishes off to one side. As you can see from the image shown here, it is quite different from the Idlewylde 2600 pattern. In this early pattern the leaves are largely in outline form with the borders being in black, grey or reddish-brown. The two small leaves, in blue, are the only ones solidly filled in.

The Hycroft records suggest that this pattern was available in 1956 and 1957 only, and 20-piece sets sold for around \$3.75 each. •

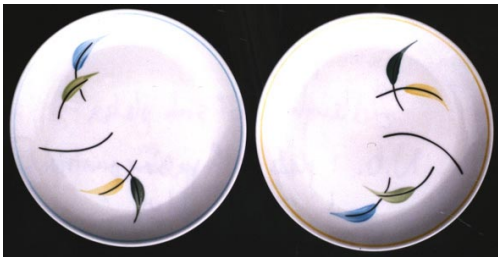
Idlewylde: Pattern No. 2600

The later Idlewylde pattern was produced from 1959-1964 on the round coupe style of dishes, and it too does not seem to have been very popular as it is seldom seen in the marketplace. Like the earlier pattern, it is basically a leaf design, but a more colourful one where the leaves are fully filled in. The one in the FOMS collection is described as having "a dark green and a yellow leaf on one side and a light green and a blue leaf on the other side of a black arced line (1/4 circle) separating the two pair of leaves, all on a white plate with a blue band around the rim".

The Hycroft records state that it is

comprised of blue, green or yellow leaves with either a blue or a yellow band around the rim. The pair of side plates shown here have the two varieties of rim banding, but regrettably when printed in black and white the difference cannot be discerned. The cereal bowls and cups were available in either blue or yellow.

So far I have not seen a Hycroft stamp that includes the pattern name along with the hand decorated stamp, but this could well be due to not seeing very many examples of this pattern.



Polka Dots: Pattern No. 1400

This hand-decorated pattern is found on the round coupe style of dishes. The dots can be found in blue, yellow, green or pink dots applied on plain white. The dots are quite large measuring about 9 mm. in diameter. So far I have not seen any samples where the colours were mixed on a given piece and, to date, I have not seen any pieces finished with pink dots.

Advertisements indicate that the cup and cereal bowls were solid colors available in blue, yellow or green. The saucers to go with the cups though, it seems, were decorated with the coloured dots as they are found in the marketplace.

Polka dots was available from 1959 to 1969, and it was an underglazed hand-decorated pattern usually with its own backstamp on the larger pieces. •



A NEW COOKIE JAR DECORATION

Since the last newsletter, two examples of this lacquered cookie jar have come to my attention, the first from a collector in Ontario and the second through an email request for information. As you can see, both examples are the large cookie jar with the twist cord handle, and both have the decoration number "48" on the bottom.



Decorat i o n number 48 is not one of the numbers

that I ran across in the Medalta papers or stock ledger, so I do not presently know what Medalta called this floral decoration. The background colour is a semi-gloss black and for that reason the green leaves do not stand out too well against it. The flowers themselves are white with yellow centers and most of the leaves are in two tones of green.

The cookie jar, missing its lid but otherwise in next to mint condition, is unusual as it is glazed white on the interior. I do not recall ever hearing of another cookie jar glazed in that manner and I must presume that such a finish would increase the cost somewhat. The factory stamps on the bottom included the oxide G.18 and the impressed M.7 mark,



which together date the piece from 1930-1932.

The second specimen, in poorer condition, sold at auction in Manitoba for \$300.00 thanks to being chased by three separate collectors. \$300.00 seems a bit high to me for the condition of the piece but admittedly it is a rare item. Also, I am at a loss to explain the condition as most of the leaves and flowers are fairly intact. It almost appears that someone tried to remove the black lac-

quer without damaging the pattern itself! Perhaps the explanation would be readily apparent if one was looking at the piece rather than just a photograph of it. It too is very early, perhaps 1930-1931, judging by the white oxide stamp found on the bottom, G.13.b.



ANOTHER COOKIE JAR LAMP BASE

An Edmonton collector was kind enough to send me the photographs of this piece, and I sincerely appreciate the help of collectors in sharing their finds with me. As most of you know the cookie jar lamp base is very hard to find. Other than this one, I have only recorded two others and both of those were decorated with the iris pattern. If you have one of the newer versions of Bruce Douglas' booklet "Medalta Lamps" you can see the iris pattern in its full colour, blue irises with green leaves around, all against a yellow background.



The floral decoration on this Edmonton piece appears to be the apple blossom design but like the other cookie jar lamp bases it too does not have a decoration number anywhere on it. The flowers are in shades of yellow with a white center and brown spot in the middle, while the leaves are in greens and yellow, all against a red background. Although I did not inquire as to what was paid for this piece, I suspect that in today's market it would sell in the \$350.00 to \$500.00 range even though it has no identifying Medalta label on it. •

Three More Hycroft Hat Ashtrays, High Style

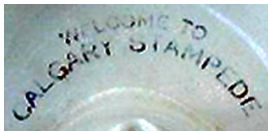
FOLLOW-UP

Newsletter issue 13, Spring 2001, discussed Hycroft's high style, hat-shaped ashtray giving a listing of the named pieces that had been recorded to that date. In the last six months three new ones have come to my attention.

The one advertising the Acme Novelty Company is now in the FOMS collection thanks to a Calgary reader who decided to donate his hat to help complete the Museum's collection. As usual for these hats, the writing was in gold on plain white with no hatband or trim around the rim, and neither was it marked with a Hycroft stamping. The naming on this hat is much busier than what you usually find. It says "ACME NOVELTY LTD./WHOLESALE/723-10th Ave. S.W./Phone AM25064/CALGARY" at the front & "TOYS - JEWELLERY - GIFTS/CARNIVAL EQUIPMENT/TROPIES" at the back facing the opposite direction.

My search of the Hycroft rubber stamps and invoices did not produce a specific reference to this piece. Acme was a distributor through which many businesses placed orders for named pieces, and the lack of specifics in those records prevents a positive identification of the order for this particular hat.

"WELCOME TO/CALGARY STAMPEDE" is the naming on the second ashtray that showed up. It originally was listed on ebay selling for about \$20.00 US, and then it resurfaced at the Canada Olympic Park antique sale where the asking price was \$35.00 Canadian. I should have bought it for the FOMS society even though the gold lettering



was somewhat worn. Thirty-five dollars is a bit high for a Hycroft hat, especially in worn

condition, but perhaps it is worth that much as a Stampede collectible.

Due to the wear, the picture here is not too clear, but it is the best that I can do with my scanner.

The third hat also showed up on ebay, and I was really surprised that no one else bid on it considering the fact that it also related to the Grey Cup. After the exchange between dollars and with shipping charges added on, it cost about \$25.00 Canadian.

The naming in case it does not show clearly in the picture says "MEDICINE HAT GREETINGS/ALLOUETTE MAJORETTES" at the front & "ENROUTE TO THE GREY CUP GAME/1958" at the back.

It, like almost all high style hat ashtrays, has the naming in gold on an otherwise plain white hat and it does not bear a maker's mark. So far I have not been able to find the order for this hat in the Hycroft records.



A Named Medicine Hat Potteries Cup and Saucer

Thank goodness the cup was displayed so that you could see the lettering on it, otherwise I am sure that I would have walked right by. After all, it was just plain white and in that commonly found 92A shape!

I picked the cup up to check for a mark on the bottom and indeed I was not disappointed as it, like all 92A and 92B cups that I have looked at, had no mark on the bottom. What was surprising though was the saucer on which the cup was sitting. It was marked with the same diamond shaped symbol as on the side of the cup, right in the center of the cup ring. Most matching saucers have the naming on the rim where it can be seen when the cup is on the saucer, but in this case the naming on the saucer is hidden when the cup is in place.



So I picked up the saucer to check for a stamp and imagine my surprise when I found that it had one. There in black oxide, as clear as could be, was the 'Little Chief' trademark.

The saucer is what I refer to as the high style of saucer as the rim is not flattened as on the other commonly seen style of saucer. It measures 6-inches in diameter and stands 1-inch high. The cup is just under 3-inches high and measures about 3½ inches across the top. What the naming YAPA within the black diamond shape stands for is presently unknown. One person thought it might have something to do with the Anglican Church, but so far I have not been able to confirm that. Can one of our readers help us? I hope so; please phone or write if you know what the initials stand for. •

FROM THE EDITOR

Thank you for your patience in waiting for the Malibu Club special issue of the newsletter. It is presently in the hands of the layout artist, and hopefully will be in your home before the end of October. For your interest about eight of our readers made a donation to the FOMS to make this issue possible, and while they did receive a charitable donation tax receipt, that only partially compensates them (about 42%) for their gift. Just over \$200.00 was received from our readers, and since each issue has direct costs of just under \$200.00 we have a little bit to carry over for next years special issue.

To each one of you for making this issue possible, my sincere thanks. And on behalf of all of our subscribers, thank you, thank you, thank you. •



Medalta's Double-Spouted Creamer

The Medalta letters clearly show that the company wanted to make the double-spouted creamer as it could be quickly jiggered as opposed to making the more decorative slip-cast one with its rolled rim and base.



The taller one, shown below on the left-hand side, recently appeared on the internet auction ebay and surprisingly only received one bid. Admittedly it was not a thing of beauty as it had a fairly good sized chip from the base as well as gray staining on the white interior. In addition, the dark green of the exterior was unusually dull which I have described as a drab dark green in the past.



After converting the winning bid to Canadian funds and paying another \$5.00 US for postage, the price was about \$14.00 Canadian, so it was not a bargain, especially considering its condition. Why was I willing to pay this much for it? Primarily because this style of creamer is hard to find, and I had not seen it before in the dark green/white lined hotelware finish.

Bill Kellett, the B.C. Medalta-Holic mentioned in the last newsletter, kindly provided me with this photo comparing his creamer with the one I acquired. In addition, in the middle, he included the single egg cup at my request as I thought that this creamer was simply the egg cup with spouts pressed from the rim. Such does not seem to be the case.

The small double-spouted creamer measures 1 5/16 inches across the base and is 1 7/8 inches high, while the larger one measures 2 inches at the base and is 2 1/4 inches in height. Both are marked with the G.33 mark. The single, footless egg cup on the other hand is consistently a bit smaller measuring 1 3/4 inches in height.

The only other colours that I have recorded for the double-spouted creamer is plain white and wine. •



Medicine Hat, Alberta
December 17, 1941.

Mr. B.A. Cunliffe,
136 Water Street,
VANCOUVER, B.C.

Dear Sir:

We have on hand your order no. 2727 of December 12th, which you want in a rush. The 2 oz. creamer is alright, but you have a note that the 1 oz. creamer should be the regular creamer and not the double lip. Unfortunately we discontinued making our regular 1 oz. creamer and we make the double lip only. This is done because we can always make the double lip creamer at least three times as fast as the other one, because it is jiggered, while the other one is cast. However, it would be easy for us to make the double lipped creamer with the one lip provided the shape is satisfactory.

Will you let us know if it would be alright to make our double lipped creamer with the one lip only. If not we may have to cast the other one, but it is rather a slow process.

Yours very truly,
MEDALTA POTTERIES LIMITED

CODES:
A.B.C. 5TH ED.
BENTLEY'S
ORIENTAL 3 LETTER

TELEPHONE MARINE 7847
CABLES:
COLOREXIM

Columbia-Orient Export and Import Co., Ltd.

B. A. CUNLIFFE, MANAGER

B. W. CUNLIFFE, SECRETARY

AGENTS:
Medalta Potteries Ltd.
Hotel & Hospital Supply Co.
J. H. Middleton & Co.
Circle Bar Knitting Co. Ltd.

136 WATER STREET
VANCOUVER, B. C.
CANADA

December 20, 1941

Medalta Potteries Ltd.
Medicine Hat
Alberta

Dear Mr. Phillipson:

We have your letter of December 17, re our order 2727, and have consulted with our client, but he will not consider your suggestion that the 1 ounce creamer be made by using the double lip creamer mold, and make only one lip. It is the dumpy shape of this creamer that our client objects to. It will be necessary, therefore, to cast the 1 ounce cream in the shape ordered, even though it does take a little more time.

Yours sincerely,

COLUMBIA-ORIENT EXPORT & IMPORT CO., LTD

BAC/GP

Questions & Answers

Email: From a Medicine Hat collector

We have been offered an 8-gallon crock as shown in the accompanying picture and would like your opinion on what it's worth. Also please confirm our belief that it is a drain bottom crock.

Dear collector:

The 8-gallon crock is indeed a drain bottom crock as you surmised, and I was pleased to hear about it as I had not previously seen one made by Medicine Hat Potteries with the 'Little Chief' trademark on it.



As to its value, large crocks are a hard sell at the best of times as they are so heavy and take up so much room. My guess as to value, which is based on prices for Medalta's crocks, would place it in the \$125.00 to \$175.00 range. A MHP specialist might be willing to go as high as \$250.00 but if I was still collecting for the Glenbow Museum I would not go higher than \$175.00.

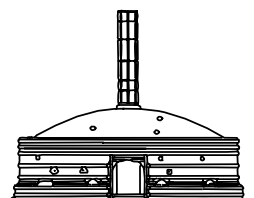
Editor's note: This email question actually came to a Calgary collector who consulted with me concerning it as he was not aware of its value or rarity. I later heard that the asking price for this rarely seen piece was \$1000.00. Wow!! •

Want Ads

Please remember that your subscription gives you a free ad up to thirty words or so. Please take advantage of this to try to fill voids in your collection, and if you do not want your name mentioned, the contact can be made through the editor.

Wanted: Hycroft cups in the Serenada and Game Birds pattern (Canada geese) and saucers in the Doodles, New York, Shasta Rose, Silvery Pine and Denim (green speckled) patterns. I am trying to find mates for my widows. Ask for Bill at 604-434-6414.

Wanted: A Ranchmen's Club saucer. Phone Hal at 403-249-5103. •



703 Wood Street
MEDICINE HAT, Alta.
Canada T1A 8S9
Phone/FAX 403-529-1070
<http://www.medalta.org>

The Best of the C.O.P. Sale

At long last, the first time ever I believe, the antique sale at Canada Olympic Park had decent weather. For a change, we were not all sliding through the mud nor shivering in the rain. I did not hear of any super finds at the show, but most of the pottery collectors that I ran into had at least picked up something for their collections. As usual, I found a few pieces of Sunburst and Hycroft that were good additions to the collections of the Friends of Medalta Society.

I managed to get pictures from another collector of two of the rarer pieces that showed up at the sale, a style No. 1 vase and a 10 gallon butter churn.

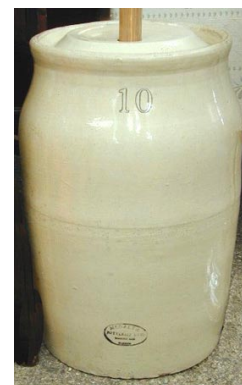
The No. 1 vase is indeed a beauty, finished in a glazed decoration that I have not previously recorded, although one collector advised me that he has seen the same decoration on a different vase. Basically, it is a leaf and stem decoration in brown and green tones hanging downward on one side of the vase. Towards the middle of the stem are two dark green 'blobs' that may be cones. The background colour is a sky blue around the top and bottom while the leaf/stem decoration is pleasantly accented against a whitish area in the center.



The number one vase for those who do not know its size, stands only 5-inches high, and is well marked on the bottom with an impressed stamping unique to the vase. I do not know if this vase sold at the show or not but I heard that the asking price was about \$275.00.

The date of this particular decoration is not known but the No. 1 vase was first introduced in 1932. My guess is that it dates between then and 1936.

The second piece that I liked was the 10-gallon butter churn. It appeared to be both complete with lid and dasher and in very good condition. It was the earlier unhandled variety with one of the oval Medalta Potteries Ltd. stamps on the side (G.5.f) just above the bottom. Those characteristics suggest a date from 1924 to 1928.



The asking price was high, \$475.00 if my memory serves me, but not out of line for a rarely seen piece. Since I was only at the sale the first day, I do not know if it sold or not. •